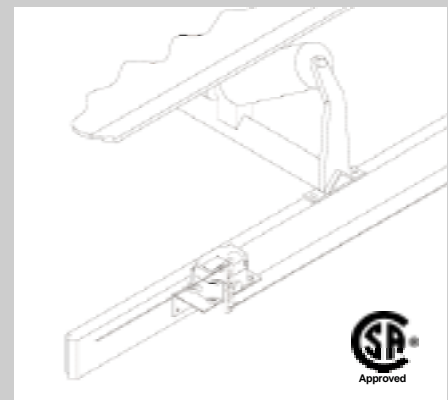


Emergency or Normal Shut-Off Control for Safer Operation

Thermo Ramsey

PRO-LINE Safety Cable Pull Switch



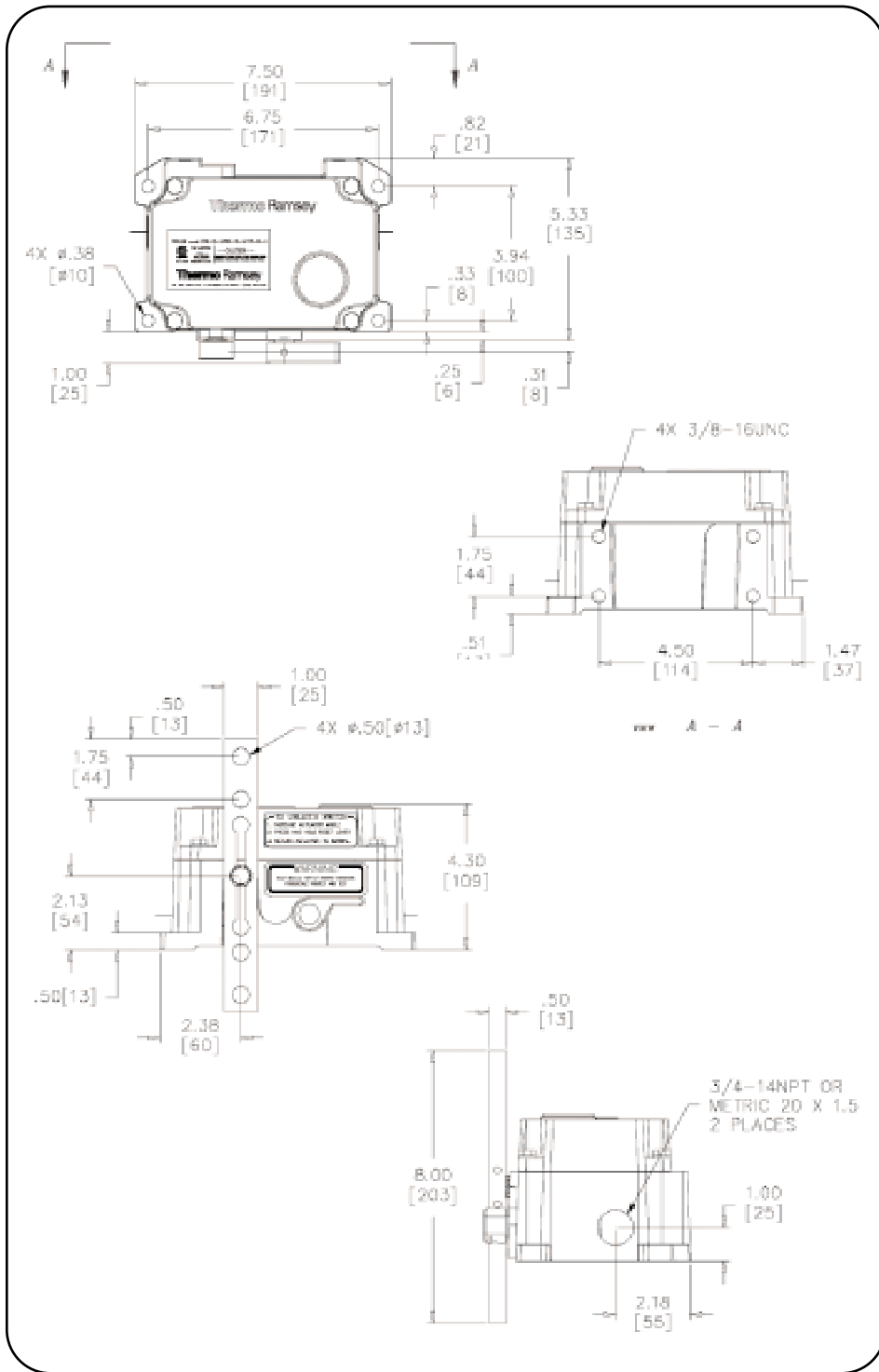
SAFETY CABLE PULL SWITCH (S.P.S.)

For Emergency or Normal Shut-Off

- Universal design for bi-directional activation allows one unit to be used for end or middle locations.
- Universal mounting design allows for either top or side mounting of the switch to the conveyor stringers.
- Rugged cast aluminum enclosure with standard NEMA-4 clear iridite finish or optional two-part baked urethane enamel finish for salty, alkaline, or acidic atmospheres. Also, electroless nickel finish optional for extremely corrosive environments.
- Full cover plate permits easy access to terminals and switches without deactivating or disassembling switch.
- Compact design for tight-fit areas.
- Highly visible black arm against silver or yellow background easily shows condition of the switch, indicating alarm or normal.
- Complete accessories available including cable, standoff eyes and cable clamps.
- Stocked by local distributors for immediate delivery.
- Manual reset lever.
- CSA approved Class II models available, along with barriers for Class I areas.
- Optional red flags available for notification of alarm condition.

A pull cable is terminated at one end from a fixed mounting and attached at the switch end to one of the actuating arm holes. Force applied to the pull cable at any position causes the actuating arm to rotate 20° to a tripped-locked position. This will stay locked until manually reset by the reset lever.

At the same time as the switch is mechanically locked out, 2 microswitches activate SPDT circuits for alarming equipment circuits of the stop condition. Although the black arm in the alarm condition is quite visible, accessories such as auxiliary flags or lights can be supplied. Also available are specially designed mounting hardware, which can eliminate welding or drilling holes in the conveyor for mounting.



SPECIFICATIONS

- 2 Switch rating SPDT 10A 480V
- NEMA-4 weatherproof enclosure
- Lock angle 20 degrees
- Pull rating 8 - 18 pounds
- Two or three conduit openings, threaded 3/4" - 14 NPT
- Recommended spacing between switches: 200 ft. with factory size cable and supports every 10 feet
- Meets OSHA requirements for safety shutdown
- CSA approved models for Class II Division 1 & 2, Group E,F, & G

APPLICATIONS

Emergency or Normal Stop for:

- Conventional belt conveyors
- Shuttle conveyors
- Apron feeders & conveyors
- Bucket elevators
- Packaging lines
- Stockpile/reclaim systems, cranes, shovels and drag-lines
- Ship loading/unloading systems
- Horizontal feed systems

OPTIONS

- Universal mounting plate
- Secondary flag alarm
- Complete hook-up accessories including: cable, clamps, standoffs and lights
- Optional finishes include:
 - Double baked urethane enamel
 - Electroless nickel
- NEMA-4 and NEMA-9 Alarm Light
- European tension spring-loaded mounting hardware

Models Available

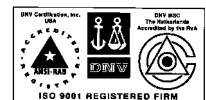
- Standard NEMA-4
 - SPS-2D Dual Switch
- Class II - CSA Approved
 - SPS-2D-3 Dual Switch
 - SPS-2D-3-NP Dual Switch
 - Nickel Plated (NEMA-4X)

Thermo Ramsey

501 90th Avenue N.W.
 Minneapolis, MN 55433
 (763) 783-2500 FAX: (763) 783-2525
 www.thermoramsey.com

Thermo Ramsey Companies in:

Australia	Italy	Spain
Canada	Mexico	The Netherlands
Germany	South Africa	United Kingdom



CERTIFICATION NO. 99-HOU-AQ-8174