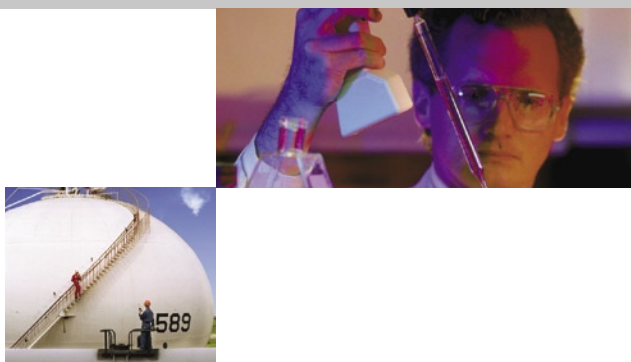


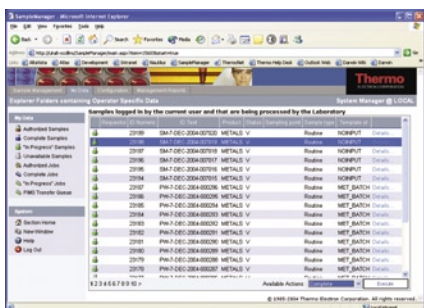
SampleManager is a Laboratory Information Management System (LIMS) specifically designed to serve as an enterprise solution for global companies.

SampleManager LIMS™

The enterprise LIMS for chemical and petrochemical companies



Reviewing SampleManager data through the Web interface.



Challenge

Industrial LIMS are an important component of a comprehensive quality management solution that often includes Process Information Management Systems (PIMS), Manufacturing Execution Systems (MES) and Enterprise Resource Planning (ERP). Together, these systems continuously monitor and control production processes, however the LIMS – which stores product quality data – generally operates independent of the other systems. Therein lies the problem. Companies contend with two separate islands of information, resulting in inefficient data management and decision-making.

Today, companies need a LIMS with greater flexibility and ability to meet the needs of the broader organization. An ideal LIMS is one that serves as an integrated platform capable of supporting key enterprise processes and systems. Enterprise LIMS include XML web services for open

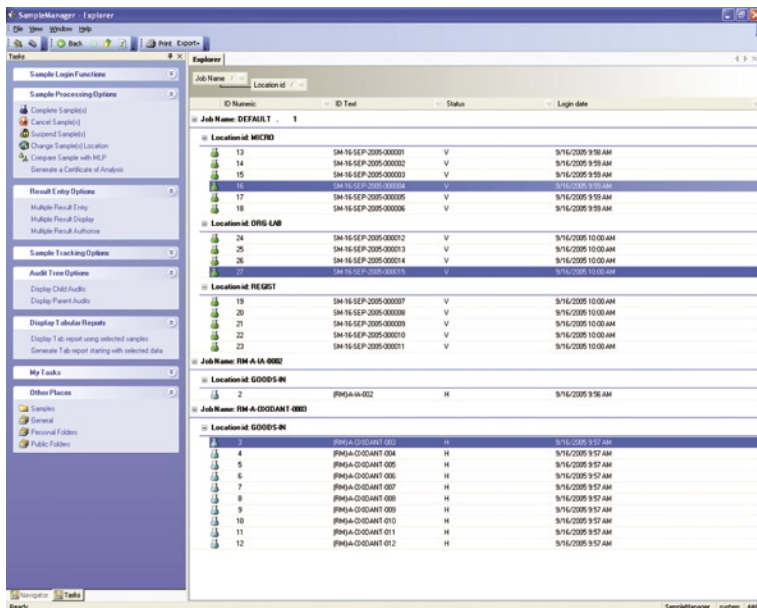
communication with lab and enterprise applications, and client/server functionality for greater access to information and insight into data across the organization.

Thermo's Solution

Specifically developed for enterprise deployments, SampleManager is the LIMS of choice for many chemical and petrochemical companies. It can be implemented in one or multiple instances, is scalable for a large user base and is available in multiple languages. It is flexible and configurable to accommodate various workflows, lab types and user communities across the enterprise. SampleManager integrates easily with other applications and instruments in and out of the lab, providing one standard user-interface and helping companies to enforce process standardization across multiple labs.

SampleManager includes a web browser

SampleManager LIMS



SampleManager's updated task-driven interface simplifies the user experience. Inductive sample-processing, for example, shown here, tells users which valid actions are available to them: complete, cancel, suspend, or change the location.

interface for remote sample login, data access and reporting. Secure access to the LIMS data is available for laboratory staff, remote users and external customers.

SampleManager's web services interface allows the LIMS to be delivered as a network service that can be integrated using common Internet standards, such as ASP, XML, SOAP and HTTP. These industry standard tools help dramatically simplify and reduce the costs of integrating SampleManager with other laboratory and business systems, including PIMS, MES and ERP solutions.

Lower Total Cost of Ownership

A global solution helps reduce the total cost of ownership. An independent study, commissioned by Thermo, confirms this. Enterprise LIMS reduce costs by centralizing and consolidating IT and technical support personnel. With one solution, IT departments can develop more knowledge of a particular LIMS to identify and solve problems faster, even anticipate them before they occur. This frees IT staff to focus on business activities.

An enterprise LIMS reduces downtime and increases productivity for the end-user. Lower costs can also be achieved in the areas of implementation, systems integration, upgrades, application development and training.

In addition, standardization streamlines vendor relationships and improves purchasing power.

Ensure Product Quality and Avoid Delays

With an enterprise LIMS, companies can spot trends and monitor product quality more quickly and easily, dramatically improving their overall quality control process. An integrated approach results in

better data flow, less redundant data and virtually no transcription errors, increased laboratory efficiency – all while maintaining the highest quality standards. Duplicate data and manual entry of sample requests and testing parameters are eliminated through instrument integration.

SampleManager helps ensure accurate data flow between the lab and the rest of the organization. Having that data available to managers and decision-makers organization-wide leads to faster, data-driven business decision-making.

Partnering with Thermo

Thermo is the worldwide leader in laboratory software and related services, providing enterprise-wide, multi-laboratory solutions that have become the corporate standard at leading organizations. Our LIMS and CDS control manufacturing quality data at many of the world's chemical and petrochemical companies. To support our global customers, Thermo provides implementation, training, maintenance and support from the industry's largest worldwide informatics services network.

SampleManager is the flagship LIMS in Thermo's comprehensive portfolio of software solutions, including Atlas CDS™, a leading enterprise chromatography data system that integrates tightly with SampleManager; Nautilus LIMS™, for discovery and R&D; and GRAMS spectroscopy analysis software.

For More Information

Visit us on the web at www.thermo.com/informatics or call +1 866-463-6522 (US) or (44) 161 942 3000 (Intl).