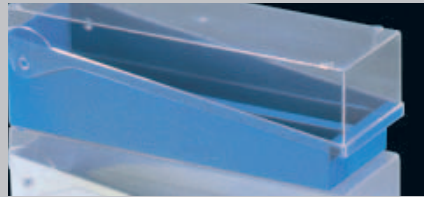


# Total Solutions in Anatomical Pathology

- Cassettes
- Slides
- Storage



## Shandon Cassettes and Slides Storage



### Slide File Storage System






- Holds 3" x 1" (75 x 25 mm) slides.
- Stores up to 100 slides (one per slot), 200 slides (2 per slot), or 400 slides (slide tray removed).
- Stackable for space efficient storage.
- Transparent hinged cover.
- Numbered slots for easy identification.
- Six drain holes provide complete emptying of any liquid in tray.

Color		Order No.
Blue		B1000700BL
Green		B1000700GR
Gray		B1000700GY
White		B1000700WH
Yellow		B1000700YW



### Plastic Slide Folders

- Variety of colors for easy color-coding of slides.
- Holds up to twenty 3" x 1" slides.
- Transparent top.
- Stackable and heat-resistant.
- 10 folders per case.

Color		Order No.
Blue		B1001200BL
Green		B1001200GR
Gray		B1001200GY
White		B1001200WH
Yellow		B1001200YW



### Microscope Slide Dispenser

- Holds 72 slides
- Provides a clean, fingerprint-free slide every time
- Avoids slide breakage
- Simplifies loading
- Constructed of stainless steel with suction-cup feet to keep unit in place

Order number 141



### Modular Cassette Storage Drawers

- Provide permanent storage of up to 165 embedding rings or 250 cassettes per drawer.
- Interlocking ridges on top and bottom permit stacking to any convenient height.
- Made from high-impact polystyrene.
- Identification labels included.

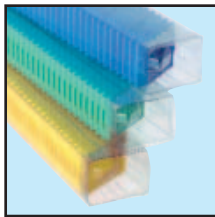
Order number B1001304



### Biopsy Processing/ Embedding Cassettes II

Qty: 500/Box  
Pore Style: Small, Square  
Locking lid attached by two hinges

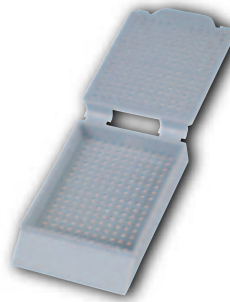
Color		Order No.
White		1001097
Pink		1001098
Green		1001099
Yellow		1001100
Blue		1001101
Gray		1001104
Orange		1001106
Peach		1001102
Tan		1001103
Lilac		1001105
Aqua		1001107
Dark Green		B1001005
Dark Red		B1001006
Dark Blue		B1001007



### Biopsy Processing/ Embedding Cassettes II in Tube Packs

Qty: 10 Tubes  
75 Cassettes /Tube  
Packed in 75-cassette tubes for use  
with the MicroWriter Cassette  
Labeler or simply as a convenient  
method of storage.

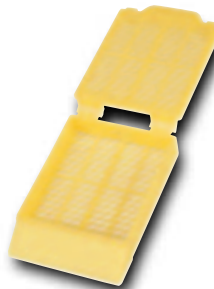
Color		Order No.
White		B1000730WH
Pink		B1000730PK
Green		B1000730GR
Yellow		B1000730YW
Blue		B1000730BL
Peach		B1000730PE
Tan		B1000730TN
Gray		B1000730GY
Lilac		B1000730LI
Orange		B1000730OR
Aqua		B1000730AQ
Dark Green		B1000730DGR
Dark Red		B1000730DRD
Dark Blue		B1000730DBL



### Biopsy Processing/ Embedding Cassettes I

Qty: 500/Box  
Pore Style: Small, Square  
Locking lid attached by two hinges  
Not available in Tube Packs.

Color		Order No.
White		1000968
Pink		1001090
Green		1000969
Yellow		1000970
Blue		1001091
Gray		1000971
Orange		1001095
Peach		1001092
Tan		1001093
Lilac		1001094
Aqua		1001096
Dark Green		B1000999
Dark Red		B1001000
Dark Blue		B1001001



### Processing/Embedding Cassettes I

Qty: 500/Box Pore Style: Slotted  
Locking lid attached by two hinges  
Not available in Tube Packs.

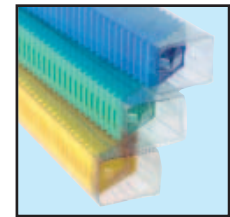
Color		Order No.
White		1000957
Pink		1000958
Green		1000959
Yellow		1000960
Blue		1000961
Gray		1000964
Orange		1000966
Peach		1000962
Tan		1000963
Lilac		1000965
Aqua		1000967
Dark Green		B1000996
Dark Red		B1000997
Dark Blue		B1000998



### Processing/Embedding Cassettes II

Qty: 500/Box Pore Style: Slotted  
Locking lid attached by two hinges  
to open from front or back

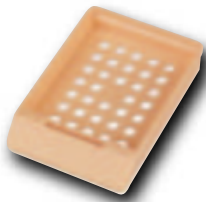
Color		Order No.
White		1001061
Pink		1001060
Green		1001059
Yellow		1001058
Blue		1001057
Gray		1001054
Orange		1001052
Peach		1001056
Tan		1001055
Lilac		1001053
Aqua		1001051
Dark Green		B1001002
Dark Red		B1001003
Dark Blue		B1001004



### Processing/Embedding Cassettes II in Tube Packs

Qty: 10 Tubes  
75 Cassettes /Tube  
Packed in 75-cassette tubes for use  
with the MicroWriter Cassette  
Labeler or simply as a convenient  
method of storage.

Color		Order No.
White		B1000729WH
Pink		B1000729PK
Green		B1000729GR
Yellow		B1000729YW
Blue		B1000729BL
Peach		B1000729PE
Tan		B1000729TN
Gray		B1000729GY
Lilac		B1000729LI
Orange		B1000729OR
Aqua		B1000729AQ
Dark Green		B1000729DGR
Dark Red		B1000729DRD
Dark Blue		B1000729DBL



## Embedding Cassettes

Qty: 500/Box

Pore Style: Round holes standard

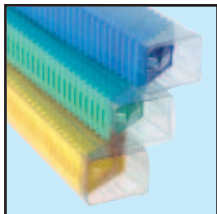
Lids sold separately.

Uses stainless steel lids (No. 1001003 – 25/pk)



Lids are designed for use with Shandon cassette numbers B1003500 series.

Color	Order No.
Clear	B1003500CL
White	B1003500WH
Pink	B1003500PK
Green	B1003500GR
Yellow	B1003500YW
Blue	B1003500BL
Gray	B1003500GY
Orange	B1003500OR
Peach	B1003500PE
Tan	B1003500TN
Lilac	B1003500LI
Aqua	B1003500AQ
Dark Green	B1003500DGR
Dark Red	B1003500DRD
Dark Blue	B1003500DBL



## Embedding Cassettes In Tube Packs

Qty: 10 Tubes  
75 Cassettes /Tube

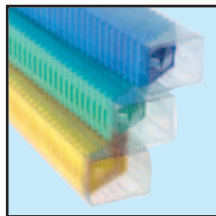
Color	Order No.
Clear	B1000732CL
White	B1000732WH
Pink	B1000732PK
Green	B1000732GR
Yellow	B1000732YW
Blue	B1000732BL
Gray	B1000732GY
Orange	B1000732OR
Peach	B1000732PE
Tan	B1000732TN
Lilac	B1000732LI
Aqua	B1000732AQ
Dark Green	B1000732DGR
Dark Red	B1000732DRD
Dark Blue	B1000732DBL



## Tissue Cassettes IV

Qty: 250/Box Pore Style: Slotted  
Locking lid attached by a two-piece, molded hinge

Color	Order No.
White	41720
Pink	41724
Green	41723
Yellow	41722
Blue	41721
Gray	41727
Orange (Peach)	41726
Peach	—
Tan	41725
Lilac	—
Aqua	—



## Tissue Cassettes IV in Tube Packs

Qty: 10 Tubes  
75 Cassettes /Tube

Packed in 75-cassette tubes for use with the MicroWriter Cassette Labeler or simply as a convenient method of storage.

Color	Order No.
White	41720-T
Pink	41724-T
Green	41723-T
Yellow	41722-T
Blue	41721-T
Gray	41727-T
Orange (Peach)	41726-T
Peach	—
Tan	41725-T
Lilac	—
Aqua	—



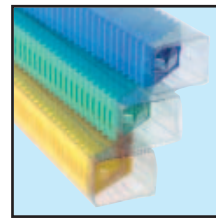
## Microsette® Biopsy Cassettes

Qty: 1000/Case (4 x 250 per box)

Pore Style: Small holes of 0.36 mm diameter

Large compartment measuring 25 x 30 mm for maximum fluid exchange

Color	Order No.
White	B1000733WH
Pink	B1000733PK
Green	B1000733GR
Yellow	B1000733YW
Blue	B1000733BL
Gray	B1000733GY
Orange	B1000733OR
Peach	B1000733PE
Tan	B1000733TN
Lilac	B1000733LI
Aqua	B1000733AQ
Dark Green	B1000733DGR
Dark Red	B1000733DRD
Dark Blue	B1000733DBL

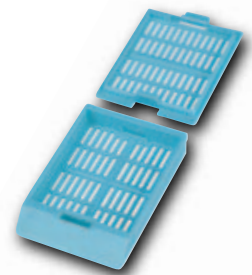


## Microsette® Biopsy Cassettes In Tube Packs

Qty: 10 Tubes  
75 Cassettes /Tube

Packed in 75-cassette tubes for use with the MicroWriter Cassette Labeler or simply as a convenient method of storage.

Color	Order No.
White	B1000731WH
Pink	B1000731PK
Green	B1000731GR
Yellow	B1000731YW
Blue	B1000731BL
Gray	B1000731GY
Orange	B1000731OR
Peach	B1000731PE
Tan	B1000731TN
Lilac	B1000731LI
Aqua	B1000731AQ
Dark Green	B1000731DGR
Dark Red	B1000731DRD
Dark Blue	B1000731DBL

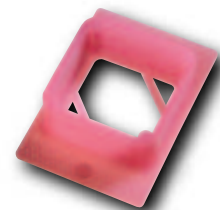


## Uni-Capsettes™

Qty: 500/Bag Pore Style: Slotted

Locking lids are included but unattached

Color	Order No.
White	9996420
Pink	9996422
Green	9996423
Yellow	9996421
Blue	9996424
Gray	—
Orange	9996491
Peach	—
Tan	9996490
Lilac	9996494
Aqua	9996493
Gold	9996492

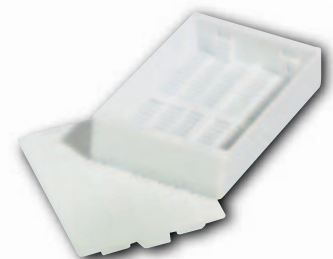


## Embedding Rings

Qty: 250/Box

Precision molded plastic  
Fits most base molds

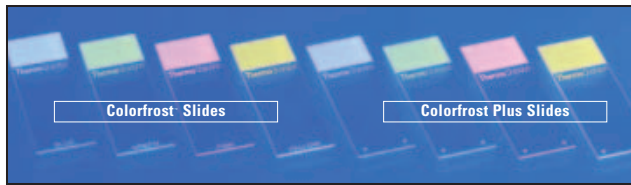
Color	Order No.
White	1000952
Pink	1000953
Green	1000954
Yellow	1000955
Blue	1000956



## Super Mega™ Cassette

Cassette Qty: 100/Box  
72 x 52 x 17 mm cassette is suitable for processing and embedding large blocks, whole organs or small animals.

Color	Order No.
White	151401
Green	151402



## Colorfrost® Slides

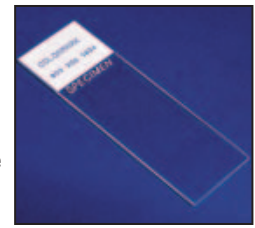
- Available in a wide variety of colors to ease identification
- Resistant to commonly used laboratory solvents
- 1.0 - 1.2 mm thick with ground edges

## Colorfrost® Plus Slides

- Positively charged microscope slides give improved cellular adhesion
- Electrostatically attracts tissue sections and cytology preparations, binding them to the slide
- Eliminates the need for special adhesives or protein coatings
- No background staining

## Colormark® Slides

COLORMARK Slides are designed for the Thermo Shandon MicroWriter Slide Labeler. A contrasting color is printed on the back of the White Colorfrost™ end so that the patient or specimen information etched through the painted end on the front is clearly visible. These slides are also available with positively charged White Colorfrost™ Plus adhesion coating for better specimen mounting.



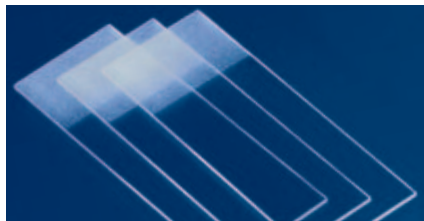
### Custom-Made Imprints (Order no. upon request)

All slides are available with imprints of hospital and institutional names per the following specifications:

- Maximum of 17 characters per line; can be letters or numbers.
- If printing 2 lines, letter size is .05" (approximately a 5 point font).
- If printing 3 lines, letter size is still .05", but the Superfrost end is reduced by .08".
- Normally, lines are printed just below the Superfrost area. They can be printed on top of the slide, but the Superfrost end will be lowered.

ORDERING INFORMATION													
COLOR	COLORFROST		COLORFROST PLUS +		COLORMARK		COLORMARK		COLORMARK PLUS +		COLORMARK PLUS +		
	PKG/QTY	ORDER NO.	PKG/QTY	ORDER NO.	PKG/QTY	ORDER NO.	PKG/QTY	ORDER NO.	PKG/QTY	ORDER NO.	PKG/QTY	ORDER NO.	
White	1000/Cs	6776206	144/Pk	+ 6776214	144/Pk	B9992000	1440/Cs	B9992000CS	144/Pk	+ B9992010	1440/Cs	+ B9992010CS	
			1440/Cs	+ 6776214CS									
Blue	1000/Cs	6776207	100/Box	+ 9991001	144/Pk	B9992000BL	1440/Cs	B9992000BLCS	144/Pk	+ B9992010BL	1440/Cs	+ B9992010BLCS	
Green	1000/Cs	6776210	100/Box	+ 9991003	144/Pk	B9992000GR	1440/Cs	B9992000GRCS	144/Pk	+ B9992010GR	1440/Cs	+ B9992010GRCS	
Pink	1000/Cs	6776213	100/Box	+ 9991004	144/Pk	B9992000PK	1440/Cs	B9992000PKCS	144/Pk	+ B9992010PK	1440/Cs	+ B9992010PKCS	
Yellow	1000/Cs	6776208	100/Box	+ 9991002	144/Pk	B9992000YW	1440/Cs	B9992000Y WCS	144/Pk	+ B9992010YW	1440/Cs	+ B9992010Y WCS	
Burnt Orange	1000/Cs	6776209	100/Box	+ 9991011	144/Pk	B9992000BO	1440/Cs	B9992000BOCS	144/Pk	+ B9992010BO	1440/Cs	+ B9992010BOCS	
Lavender	1000/Cs	6776205	100/Box	+ 9991009	144/Pk	B9992000LV	1440/Cs	B9992000LVCS	144/Pk	+ B9992010LV	1440/Cs	+ B9992010LVCS	
Tan	1000/Cs	6776201	100/Box	+ 9991012	144/Pk	B9992000TN	1440/Cs	B9992000TNCS	144/Pk	+ B9992010TN	1440/Cs	+ B9992010TNCS	
Aqua	1000/Cs	6776202	100/Box	+ 9991013	144/Pk	B9992000AQ	1440/Cs	B9992000AQCS	144/Pk	+ B9992010AQ	1440/Cs	+ B9992010AQCS	
Gold	1000/Cs	6776203	100/Box	+ 9991014	144/Pk	B9992000GL	1440/Cs	B9992000GLCS	144/Pk	+ B9992010GL	1440/Cs	+ B9992010GLCS	
Strawberry Red	1000/Cs	6776204	Not Available		144/Pk	B9992000RD	1440/Cs	B9992000RDCS	144/Pk	+ B9992010RD	1440/Cs	+ B9992010RDCS	

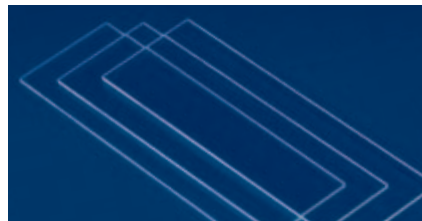
+ indicates positively charged slides



## Double Frost Slides

- Frosted end on both sides
- Available with either cut or ground edges
- Ground edges available as either 45° or 90°
- Two thicknesses: 0.8 - 1.0 mm or 1.0 - 1.2 mm
- Also available as "Single" Frost

		1000/Cs
Cut edge	1.0 - 1.2 mm	6776112
Ground edge	45° 0.8 - 1.0 mm	6776104
Ground edge	90° 0.8 - 1.0 mm	6776108
Ground edge	90° 1.0 - 1.2 mm	6776109
Single Frost,		
Ground edge	90° 1.0 - 1.2 mm	6776107



## Plain Slides

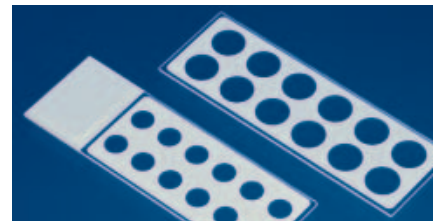
- Available with either cut or ground edges
- Two thicknesses: 0.8 - 1.0 mm or 1.0 - 1.2 mm

		1000/Cs
Cut edge	0.8 - 1.0 mm	6776106
Ground edge	90° 0.8 - 1.0 mm	6776110
Ground edge	90° 1.0 - 1.2 mm	6776111

## Polysine Slides (not shown)

- Polysine places an advanced permanent adhesive on the microscope slide
- Provides superior cell and tissue adhesion
- Built-in chemicals electrostatically and chemically attract

	144/Pk	1440/Cs
White	6776215	6776215CS
Blue	6776216	6776216CS



## Multi-Spot Slides

- Available with 12 wells of 6 mm or 9 mm diameters
- Wells are surrounded by a chemical-resistant and water-resistant PTFE coating
- PTFE coating enables slides to be washed several times for reuse

	1000/Cs
9 mm wells	9991095
6 mm wells	9991090