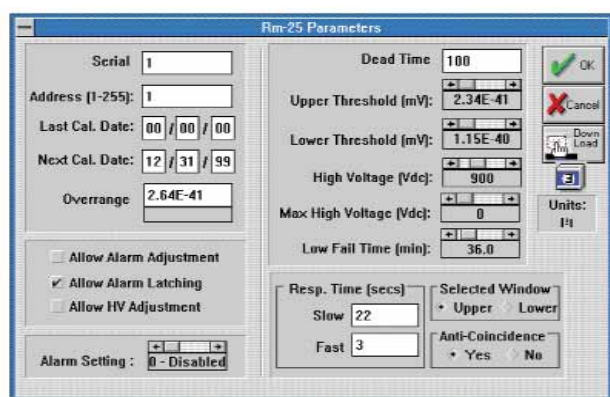


The Model RM-25 is a versatile radiation counter, which may be connected to a variety of different radiation detectors to display the activity levels and provide alarm capability. The unit is AC powered with battery back-up to facilitate either bench-top or portable applications.

RM-25

Radiation Counter



- Computer Setup & Calibration
- Variable High Voltage
- CPM or CPS Scales
- Dead Time Correction
- Rugged Construction
- Low Cost
- Works with GM, Scintillator or Proportional type detectors



Behind the tough metal cover of the RM-25 lies a microprocessor, facilitating setup and calibration, that offers a more expedient and cost effective operational instrument. The RM-25 is supplied with either Counts per Minute (standard) or Counts per Second (option RM-25OPT2) units on the analog meter display. The wide range high voltage supply supports a variety of different detector probes.

Panel controls are the range switch, volume control, fast/slow response switch, high voltage and alarm set switch and an alarm acknowledge button.

The panel switch for adjusting the alarm set point and high voltage setting may be locked out. The RM-25 is equipped with an RS-232 serial port for connection to a PC where it can be controlled via Windows™ software. This software provides controls over the instrument configuration in addition to calibrating the instrument and its probe.

Key features include automatic plateau determination, setting both the high voltage and thresholds via computer control, performing diagnostics check and running in a simulator mode for training and setting system level parameters. All settings are under password control.

RM-25

Specifications

Detector Connector:	MHV.
Serial Connection:	25 pin DB25S connector, RS-232.
Meter:	76 mm (3") scale, 50 divisions, 0 - 500 CPM or 0 - 5 CPS linear scale.
Panel Controls:	Range Switch: Off, High Voltage, Alarm Set point, x1, x10, x100, x1K, Alarm Acknowledge, Speaker Volume Control, Fast/Slow Response Switch, High Voltage / Alarm Switch.
Response Time:	Fast and slow, each programmable between 1 - 255 seconds.
Linearity:	Within 5% of full scale.
Dead Time Correction:	1 to 999 microseconds.
Alarm Point:	Adjustable from 0 to 100% full meter scale.
Alarm Latching:	User programmable to be latching or non-latching alarms.
Low Count Fail:	User adjustable 0 to 255 minutes (10 minutes default setting).
Overrange Alarm:	Adjustable from 1 to 1010 cps (106 cps default setting).
Audible Alarm:	2.5 kHz tone, independent of volume setting.
Visual Alarm:	Red LED.
Speaker:	50 mm (2") diameter, volume control (does not affect alarm volume).
High Voltage:	500 to 2500 V DC.
Sensitivity:	Lower Threshold: 0 - 5.1 mV.
Upper Threshold:	0 - 60 mV.
Anti-coincidence:	Programmable switch permits discrimination between beta and alpha pulses.
Power:	110 - 130 V AC, 60 Hz, < .25 Amp (220 V AC optional).
Temperature:	0 to 50° C (32 to 122° F).
Storage Temperature:	-20 to 85° C (-4 to 185° F).
Dimensions:	182 wide x 127 high x 175 deep mm (7.2" x 5" x 6.9" deep).
Weight:	2 Kg (4.4 lbs).
Outputs:	RS-232.
Battery Backup:	Standard, approximately 8 hours operation.

OPTIONS

- RM25OPT2 CPS Scale
- RM25OPT3 220 Vac Operation
- RM25OPT4 Calibration Software/PC Cable
- RM25OPT5 Relay Contact Output
- RM25OPT6 0 - 1 mA Analog Output

DETECTORS:

Any GM, scintillator or proportional counter supported by 500 - 2500 volts operation.

DETECTOR CABLES:

CA-15-36: MHV to MHV, 91 cm (36")
 CA-15-60: MHV to MHV, 152 cm (60")
 CA-16-36: MHV to BNC, 91 cm (36")

©2007 Thermo Fisher Scientific Inc. All rights reserved. Kapton is a registered trademark of E.I. du Pont de Nemours and Company. All other trademarks are the property of Thermo Fisher Scientific Inc. and its subsidiaries. Results may vary under different operating conditions. Specifications, terms and pricing are subject to change. Not all products are available in all countries. Please consult your local sales representatives for details. Literature Code LITRM-25 0407

Worldwide
 Frauenaaracher Strasse 96 +49 (0) 9131 909-0
 D 91056 Erlangen, Germany +49 (0) 9131 909-205 fax

United Kingdom
 Bath Road, Beenham, +44 (0) 118 971 2121
 Reading RG7 5PR United Kingdom +44 (0) 118 971 2835 fax

United States
 27 Forge Parkway +1 (508) 520-2815
 Franklin, MA 02038 USA +1 (800) 274-4212 toll-free
 +1 (508) 428-3535 fax

www.thermo.com/rmp

Thermo
 SCIENTIFIC