

Thermo Scientific VersaWeigh®

Advanced Statistics

Key Words

- VersaWeigh
- Basic Statistics
- Advanced Statistics
- Statistics

	Basic Statistics (standard)		Advanced Statistics (optional)	
	Short term	Long term	Short term	Long term
Accept pack counter	✓	✗	✓	✓
Weight-reject pack counter	✓	✗	✓	✓
Other-reject pack counter	✓	✗	✓	✓
Total packs processed counter	✓	✗	✓	✓
Counts in each weight-zone display	✓	✗	✓	✓
Total weight in each weight-zone display	✓	✗	✓	✓
Accepted packs average weight display	✓	✗	✓	✓
Accepted packs standard deviation display	✓	✗	✓	✓
All packs processed average weight display	✗	✗	✓	✓
All packs processed standard deviation display	✗	✗	✓	✓
Product giveaway, weight display	✗	✗	✓	✓
Product giveaway, percentage or value display	✗	✗	✓	✓
Histogram/bell curve graph display	✗	✗	✓	✓
Line utilization/throughput graph display	✗	✗	✓	N/A
Average weight trend graph display	✗	✗	✓	N/A
X-Bar-R (average/range) trend graph display	✗	✗	✓	N/A
Weight-zone distribution pie chart graph display, by count	✗	✗	✓	✓
Weight-zone distribution pie chart graph display, by weight	✗	✗	✓	✓
Batch/lot statistics based on Count, Time-period or both	✓	N/A	✓	N/A
Automatic incrementing of batch ID number	✓	N/A	✓	N/A
User enterable batch ID	✗	N/A	✓	N/A
Percent packs accepted (yield) graph display	✗	✗	✓	N/A

- Basic statistics includes only 'short-term' data (since the last reset – reset can be manual or will occur automatically when product is changed, power is disconnected, cut-points are changed or product is calibrated). Advanced statistics also reports long-term data (maintained for each product across multiple production runs until reset manually).
- Basic statistics average and standard deviation are

calculated from the weights of packs that are accepted only shipped. Advanced statistics also shows data of all products. In addition a view of the statistics from the filling process before out-of-tolerance packs are excluded. Note: Average and standard deviation of all product excludes packages weighing less than 20% or more than 180% of the reference weight.

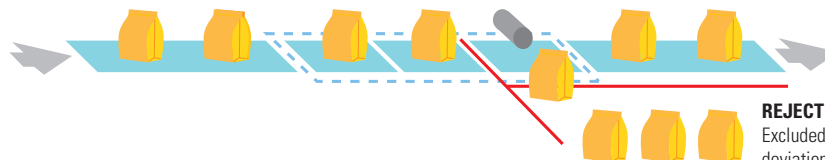
- The suite of graphs is only available with advanced statistics.
- Average weight trend graph plots accepted packs only. X-Bar-R chart plots all 'reasonable' packs. Product from 20% of reference weight to 180% of reference weight. Essentially, empty or double packs are excluded.

ALL PACKS

(these statistics only available with advanced statistics option). Average and standard deviation calculated based on 20% rule (packs less than 20% or more than 180% of target weight are excluded from calculation).

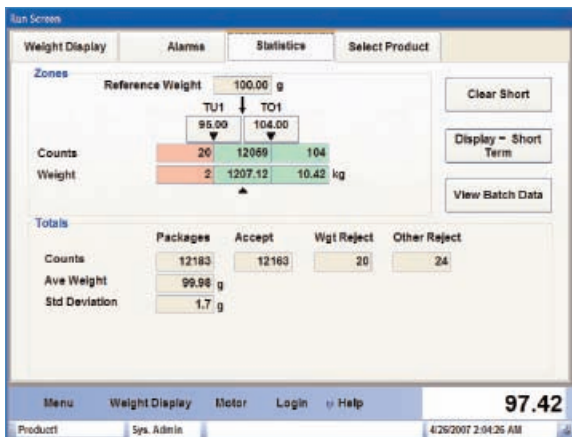
ACCEPT PACKS

Average and standard deviation calculated based on ALL accepted packs.



REJECT PACKS

Excluded from average and standard deviation calculations for 'Accepted' packs.



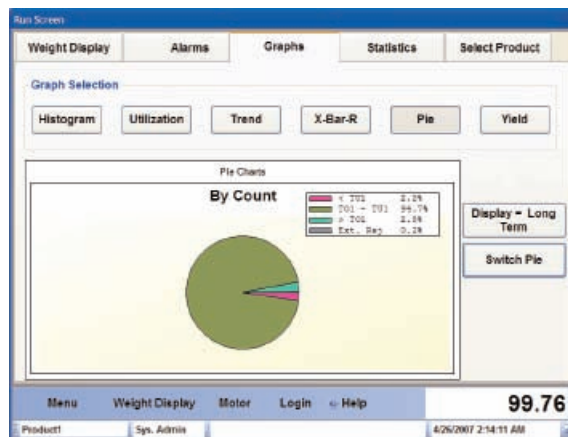
Basis statistics (with 3 weight-zone configuration)



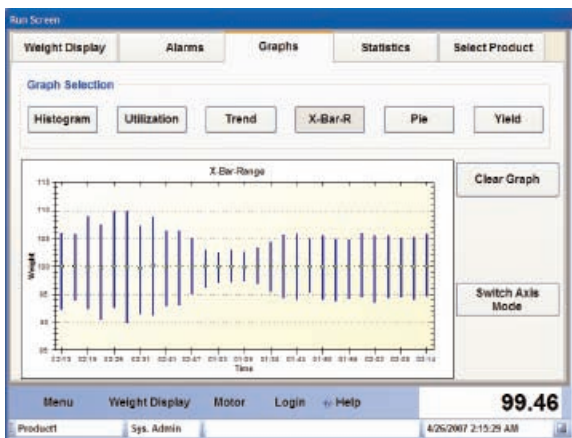
Advanced statistics (with 5 weight-zone configuration)



Histogram/bell curve graph (with 3 weigh-zone configuration)



Weight-zone distribution pie chart graph display, by count (with 3 weigh-zone configuration)



X-Bar-R (average/range) trend graph display

In addition to these offices, Thermo Fisher Scientific maintains a network of representative organizations throughout the world.

- Argentina**
+54 (0) 11 4334 3827
+54 (0) 11 4334 9159 fax
- Australia**
+61 (0) 8 8150-5300
+61 (0) 8 8234-5882 fax
- Canada**
+1 (905) 888-8808
+1 (905) 888-8828 fax
- Chile**
+56 (0) 2-335-3388
+56 (0) 2-335-1590 fax
- China**
+86 (0) 21 6865 4588
+86 (0) 21 6445 1101 fax
- France**
+33 (0) 160 92 48 00
+33 (0) 160 92 49 00 fax
- Germany**
+49 (0) 208-824930
+49 (0) 208-852310 fax
- India**
+91 (20) 6626 7000
+91 (20) 6626 7001 fax
- Italy**
+39 05 217886-1
+39 05 212729-14 fax
- Malaysia**
+60 (0) 3 5122 8888
+60 (0) 3 5121 8899 fax
- Mexico**
+52 (01) 55 5638 0237
+52 (01) 55 5639 2227 fax
- Netherlands**
+31 (0) 76-579-5555
+31 (0) 76-571-4958 fax
- Poland**
+48 (0) 22 651 75 30
+48 (0) 22 651 75 35 fax
- South Africa**
+27 (0) 11-609-3101
+27 (0) 11-609-3110 fax
- Spain**
+34 91-484-5954
+34 91-661-5572 fax
- United Kingdom**
+44 (0) 1788-820300
+44 (0) 1788-820301 fax
- United States**
+1 (800) 227-8891
+1 (763) 783-2525 fax
+1 (763) 783-2500 direct

For More Information

Thermo Fisher Scientific
Process Instruments
501 90th Avenue NW
Minneapolis, MN 55433
+1 (763) 783-2500

Visit www.versaweigh.com or
www.thermo.com/checkweighers

©2007 Thermo Fisher Scientific Inc. All rights reserved. All trademarks are the property of Thermo Fisher Scientific Inc. and/or its subsidiaries. Specifications, terms and pricing are subject to change. Not all products are available in all countries. Please consult your local sales representative for details. Results may vary under different operating conditions.