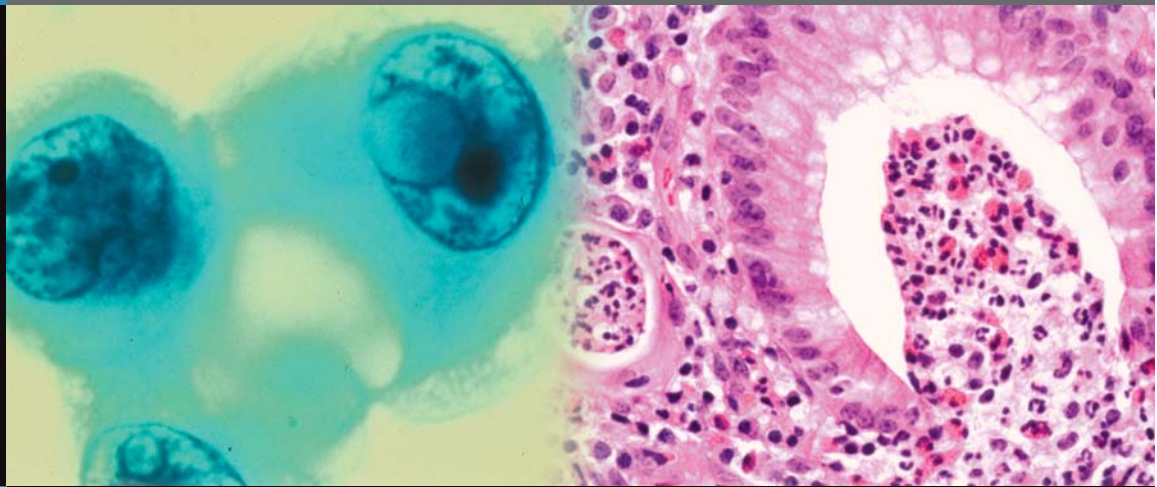


**Shandon
Slide Stainers**



Shandon Varistain® Gemini
Shandon Varistain® 24-4
Shandon Linistat™
Shandon Linistain™ GLX
Shandon Linistain™ SLS

a leader in anatomical pathology

Thermo
ELECTRON CORPORATION

Shandon Varistain® Gemini

The Shandon Varistain Gemini is a multi-basket, load-on-demand, automatic stainer with multi-program capability.

Flexibility - Performs MULTIPLE programs simultaneously

Load-on-demand multiple baskets

Continues even if the power fails

Available with or without five independently heated holding stations

Features

- Load multiple 20-slide baskets on the machine.
- Intuitive software makes it possible for the Shandon Varistain Gemini to perform separate protocols simultaneously with multiple baskets in process.
- Units available with or without five independently heated positions.
- Units have 6 water stations, 26 reagent stations, and a total of 4 configurable doors for loading and unloading.
- Battery back-up provides 40 minutes of power.

Powerful, Easy-to-Use Software

- With the touch of a single button, the software schedules runs, allocates reagents, optimizes the reagent plan and calculates the most efficient route for each protocol. Then the software graphically displays the progress of each basket along with a text summary on the unit's VGA monitor.
- Comes complete with suggested staining protocols which may be easily modified to the laboratory's procedures.
- Stores as many as 50 staining procedures in memory.

Versatile Command Features

- **Auto-allocation** optimizes reagents and efficiently uses available staining stations by calculating the quickest throughput path with the fewest moves for each basket.
- **Urgent Start** gives the user the opportunity to prioritize "urgent" baskets ahead of those already in process. The unit's software allows this speed without compromise — that is, both the slides in the rushed basket and the slides in the standard start baskets receive appropriate time in each reagent.
- **Auto-return** allows the user to recall any loaded basket.
- The user may select from three rates of agitation or no agitation at any station.
- The Shandon Varistain Gemini has strong quality control features. It displays reagent usage and batch throughput. Procedures, reagent layout, and a complete event log may be recorded on a floppy disk or printed to an optional printer for quality control records.
- The Shandon Varistain Gemini's passcode protection secures the operator's customized protocols.



Six running water positions.

Two levels of dishes accessed by a robotic arm.

Ingenious lockable baskets secure slides even upside down.

The user loads slides into clearly defined doors.



Unique Design

- Ergonomic control panels, two loading doors and two unloading doors make the stainer convenient to operate.
- Two-level design saves bench space.
- Lower-level staining stations are on a turntable for easy access to all dishes from the front of the machine.



Ingenuous lockable baskets secure slides even upside down.

The user loads slides in clearly defined doors. The user may load baskets with just one hand.

Auto-return feature allows recall of any loaded basket in case of a programming error.

Safety

- The power supply has a voltage range from 110 – 240V (±10%) and is strong enough to handle power fluctuations including surges, spikes, and brown-outs.
- In the event of a power failure, the stainer's battery back-up provides 40 minutes of power, enough time to complete staining steps for all slides which are already in process.

- Handles fume control with an easy-to-change carbon filter or through connection to an optional external vent adapter kit.
- Internal flow regulators and anti-siphon devices on the water supply lines protect the water supply.
- Smart software keeps the unit's robotic arm from entering user access areas.



Physical Specifications

Stainer Instrument

Width: 28.5" (720 mm) Depth: 28" (710 mm)
Height: 34.5" (880 mm) Weight: 176 lbs (80 kg)

Power Supply Unit

Width: 14" (350 mm) Depth: 18.25" (468 mm)
Height: 6.5" (160 mm) Weight: 22 lbs (10 kg)

Included With Product	Packaging	Part No.
Reagent Pots	3/Pack	A78010487
Reagent Pot Cover/Crescent	4/Pack	A78010488
Reagent Pot Cover/Single	6/Pack	A78010489
Staining Basket/Carrier	5/Pack	A78010466
Basket Carrier	Each	A78030062
Charcoal Filter	Each	9990610
Water Wash Pot	Each	A78010201
Water Inlet Hose	Each	AP14160
Outlet Hose	One Meter Each	AM03957
Operator Manual	Each	A78010402
Screened Data Cable	Each	A78030174
VGA Monitor (Outside North America)	Each	AP14172
VGA Monitor (North America Only)	Each	1000268
VGA Extension Cable	Each	AP14185
Power Cord Set	Each	P12032
Inlet Hose Clip	Each	P12026

Optional Accessories

Optional Accessories	Packaging	Reorder No.
Static Water Wash Station (left and right assembly)	Kit	A78010226
Stainless Steel Insert (for manual coverslipping)	3/Pack	A78010505
Basket Adapter for Large Slides	10/Pack	A78010510
Sakura® Basket Carrier	5/Pack	A78010404
Hacker Coverslipper Adapter	Each	B1000529
Vent Adapter Kit	Each	A78010467
Service Manual	Each	A78010403

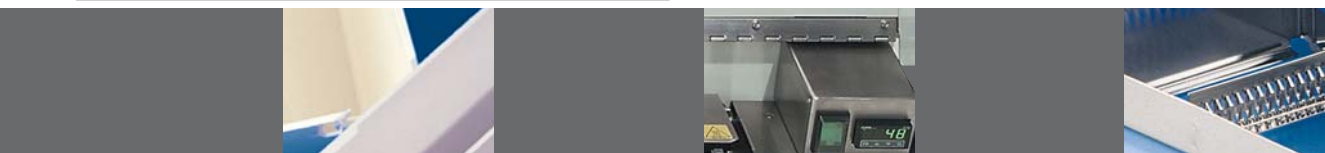
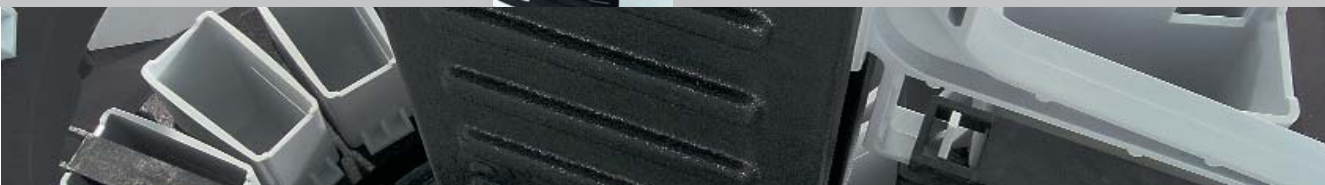
Call for information on compatibility with other automatic coverslippers.

Agency Approvals

Meets international safety standard IEC 1010; is CE marked and CSA NRTL/C approved.

Description

Description	Order Number
Shandon Varistain Gemini Automatic Slide Stainer without heat (Dual Voltage) (no monitor)	A78000001
Shandon Varistain Gemini Automatic Slide Stainer without heat (Dual Voltage) (with monitor)	A78000002
Shandon Varistain Gemini Automatic Slide Stainer with heat (Dual Voltage) (no monitor)	A78000011
Shandon Varistain Gemini Automatic Slide Stainer with heat (Dual Voltage) (with monitor)	A78000012



Shandon Slide Stainers



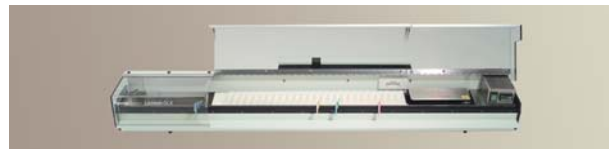
Shandon Varistain® 24-4* Continuous Automatic Slide Stainer

- Varistain 24-4 is designed for single load, double load and continuous throughput.
- The Varistain 24-4 stains 64 slides per basket, potentially (64 x 24) slides/run.
- One-piece, benchtop unit features user-specified water stations to match your routines.
- Stations hold 750 ml troughs which may be filled to 350 ml for 10-slide carriers.
- Agitation is available.
- The 24-4 can store and run either three 24-step programs or six 12-step programs.
- Precisely program your station times into the Varistain in minutes and seconds.
- Pass feature allows you to run two programs while utilizing the same reagents.
- Used in the cytology, hematology and histology laboratories.
- Compact design conserves benchtop space.
- Turntable rotates for convenient access to stations at the rear of the unit.
- The Varistain gives you consistent results run after run.
- For greater fume containment use the Hyperclean™ 2 Work Station with the Varistain 24-4.
- Integrate the Varistain with the Consul™ Automatic Coverslipper for even greater time savings and efficiency.
- Compatible with most automatic coverslippers.

*This model is available in North America as the Shandon Varistain 24-4K



Description	Order Number
Shandon Varistain 24-4 Continuous Automatic Slide Stainer (110-120V, 60Hz)	74200011
Shandon Varistain 24-4 Continuous Automatic Slide Stainer (220-240V, 50Hz)	74200010



Shandon Linistain™ GLX Random Access Stainer

- The 28-station GLX features a heater/dryer, a ductless fume extraction system with a charcoal filter.
- A three-part cover allows the user to open only the section that is needed.
- Water stations may be added at 20 of the 28 positions.
- Thermostatically controlled heater at the beginning of the staining sequence maintains user selectable temperature from 50°C to 80°C.



Description	Order Number
Shandon Linistain GLX (110-120V, 60Hz)	243604
Shandon Linistain GLX (220-240V, 50 Hz)	243603



Shandon Linistain™ SLS Random Access Stainer

- The 23-station SLS is an economical midsize linear stainer especially useful for cytology staining and other procedures that do not require heat.
- Water wash may be added at any station.



Description	Order Number
Shandon Linistain SLS (110-120V, 60Hz)	1903601
Shandon Linistain SLS (220-240V, 50 Hz)	1903602

Shandon Linistat™ Random Access Stainer

- The Linistat has the necessary features of larger stainers: 14 staining stations, running water and a 13-slide capacity collection tank.
- The Linistat is only 25 inches (64 cm) long a compact answer to H&E frozen section protocols.
- Staining time is under five minutes.
- For situations that require handstaining, the technician may dip through the stations eliminating the need to set up separate staining dishes.
- Shandon color coded slide clips correspond to the colored slides and colored frozen section embedding media, Cryochrome™.
- Fits on top of Shandon Cryotome® Cryostat.



Description	Order Number
Shandon Linistat (110-120V, 60Hz)	B1000200
Shandon Linistat (220-240V, 50 Hz)	B1000201

Leading the world in high-tech instruments, Thermo Electron Corporation helps life science, laboratory and industrial customers advance scientific knowledge, enable drug discovery, improve manufacturing processes, and protect people and the environment with instruments, scientific equipment, and sample-in/knowledge-out solutions. Based in Waltham, Massachusetts, Thermo Electron Corporation has revenues of more than \$2 billion, and employs approximately 11,000 people in 30 countries worldwide.