

Shandon Lab Support Products

Shandon High-Capacity Section Dryer

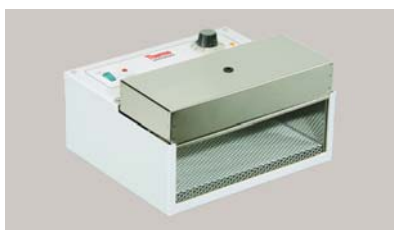


- Designed to give maximum drying area while taking up the minimum bench space.
- An optional shelf kit (Order No. B3120202SH) is available to further increase capacity.
- Air at a digitally controlled temperature is blown up through the base and back of the instrument to effect rapid drying without overheating.
- The digital controller facilitates accurate and constant temperature control from 40°- 90°C.
- The drying chamber is polished stainless steel with an autoclavable drip tray.
- The air intake has removable filters and external finish is an easy-to-clean epoxy coating.
- Patented, compact, dual voltage unit.

Description		Order Number
Shandon High-Capacity Section Dryer	110-120V, 50/60Hz	B3120202
	220-240V, 50/60Hz	B3120203
Accessory Shelf		B3120202SH

Physical Specifications	
Dimensions (H x W x D)	
Internal:	7.68" x 17.2" x 9.64" - 7.87" (19.5 x 43.7 x 24.5-20 cm)
External:	14.49" x 18.39" x 12.2" (36.8 x 46.7 x 31 cm)
Weight	
30.64 lbs. (13.9 kg)	

Shandon Section Dryer



- Compact instrument that quickly dries racks of slides using a stream of warm air.
- Selectable air temperature from ambient to 70°C allows efficient drying of slides.
- Hinged lid allows warm air to escape via spaces on either side.
- The lid and chamber lining are made from polished stainless steel for easy cleaning.
- Controls are located on top to protect them from moisture when the lid is open.
- Deep chamber holds large slide racks such as those in the Shandon Varistain® 24-4.
- Racks containing slides are placed on a grill in the glass-fronted chamber.

Description		Order Number
Shandon Section Dryer	110-120V, 50/60Hz	3120075
	220-240V, 50/60Hz	3120064

Physical Specifications	
Dimensions (H x W x D)	
External:	5.07" x 11.2" x 9.64" (12.9 x 28.5 x 24.5 cm)
Chamber:	4.25" x 10.23" x 3.14" (10.8 x 26 x 8 cm)
Weight	
9 lbs. (4.1 kg)	

Shandon Histobath™ 2

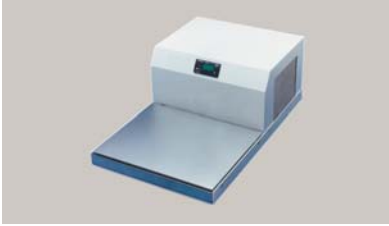


- Prevents the development of microscopic ice crystals and sample distortion caused by hyperosmolar tissue samples that are slowly frozen in a cryostat.
- Excellent method for snap-freezing tissue for enzyme assay.
- Tissue freezes through transfer of heat from the tissue to the working fluid in the chamber.
- Stainless steel mesh basket makes immersion quick and neat.
- Uses a CFC-free refrigerant and has stable temperature control.

Description		Order Number
Shandon Histobath 2	110-120V, 60Hz	2431030
	220-240V, 50Hz	2431035

Physical Specifications	
Dimensions (H x W x D)	
External:	14.75" x 19.25" x 13.5" (38 x 24 x 34 cm)
Bath Work Area:	4" Dia. x 5" Deep (10.2 x 14 cm)
Weight	
55 lbs. (25 kg)	
Bath Volume	
33.8 oz. (1 L)	

Shandon Cold Plate



- Features a large, compressor-cooled plate with removable drip tray that quickly cools molten wax in specimen cassettes.
- Surface temperature of the plate will reach a temperature as low as -8°C.
- Easy to read digital thermostat controls the unit.
- Use to keep blocks cold while sectioning.

Description	Order Number	
Shandon Cold Plate	110-120V, 50/60Hz	B3120072
	220-240V, 50/60Hz	B3120060

Physical Specifications
Dimensions (H x W x D)
9.3" x 18.4" x 23.6" (23.5 x 46.7 x 60 cm)
Weight
35.2 lbs. (16 kg)

Shandon Mini Hotplate



- Used in histology for removing stubborn wrinkles from sections and for reorientating embedded tissue.
- Can be used to heat-fix bacterial smears while avoiding cell damage through overheating in microbiology applications.
- Manufactured to operate over a fixed temperature range of 70-80° C.
- Lower casing is made from stainless steel; top is matte-black epoxy-coated aluminum.

Description	Order Number	
Shandon Mini Hotplate	110-120V, 50/60Hz	3120074
	220-240V, 50/60Hz	3120063

Physical Specifications
Dimensions (H x W x D)
External: 2.36" x 5.78" x 5.78" (6 x 14.7 x 14.7 cm)
Heated Area: 5.5" x 5.5" (14 x 14 cm)
Weight
1.21 lbs. (0.55 kg)

Shandon Slide Drying Hotplate



- Thermostatically controlled and designed with a large capacity surface to quickly evaporate water and solvents from slides and mounting media.
- Also used for warming wax-embedded specimens and for hot staining procedures.
- Slides rest above the surface of the hotplate to accelerate drying.
- Top has a matte-black epoxy coating, providing visual contrast against the wax sections; lower casing is finished in an epoxy coating.
- The controls are at the front of the hotplate and are recessed for protection.
- Thermostat dial allows selection of operating temperatures in 40° to 95°C range.

Description	Order Number	
Shandon Slide Drying Hotplate	110-120V, 50/60Hz	3120073
	220-240V, 50/60Hz	3120061

Physical Specifications
Dimensions (H x W x D)
3.34" x 11.6" x 17.7" (8.5 x 29.5 x 45 cm)
Weight
6.39 lbs. (2.9 kg)

Anatomical Pathology USA
Tel: 1-800-547-7429 1-412-788-1133
Fax: 1-412-788-1138

Anatomical Pathology International
Tel: 0800 0189396 +44 (0) 1928 562600
Fax: +44 (0) 1928 562627

Anatomical Pathology Latin America/Canada
Tel: 1-412-788-2460
Fax: 1-412-788-2480

Email: clinical.diagnostics@thermo.com Internet: www.thermo.com/shandon