

THERMO SCIENTIFIC C-FRAME SCANNER HARSH ENVIRONMENT PRODUCT SFH10

The Harsh Environment C-Frame Scanner is a unique high performance scanning platform for Thermo Scientific's on-line sensors, designed especially for harsh and demanding applications. This proven scanner design combines rigidity, reliability, and maintainability in order to ensure maximum life cycle performance.

This special C-Frame is the ideal choice for applications where there is restricted space, harsh environments, and the need to easily retract all of the measurement hardware from the production passline. The Harsh Environment C-Frame is typically configured with a vertical passline, which allows process debris to fall straight through the measurement gap, ensuring a clean unobstructed gap.

The Harsh Environment C-Frame design incorporating heavy tubular steel weldments ensure durability and guarantee the permanent alignment of source and detector for optimum measurement performance. Its extremely smooth scanning and reliable operation are due to the unique hardened flat rail with self lubricated bearings along with rail wipers.

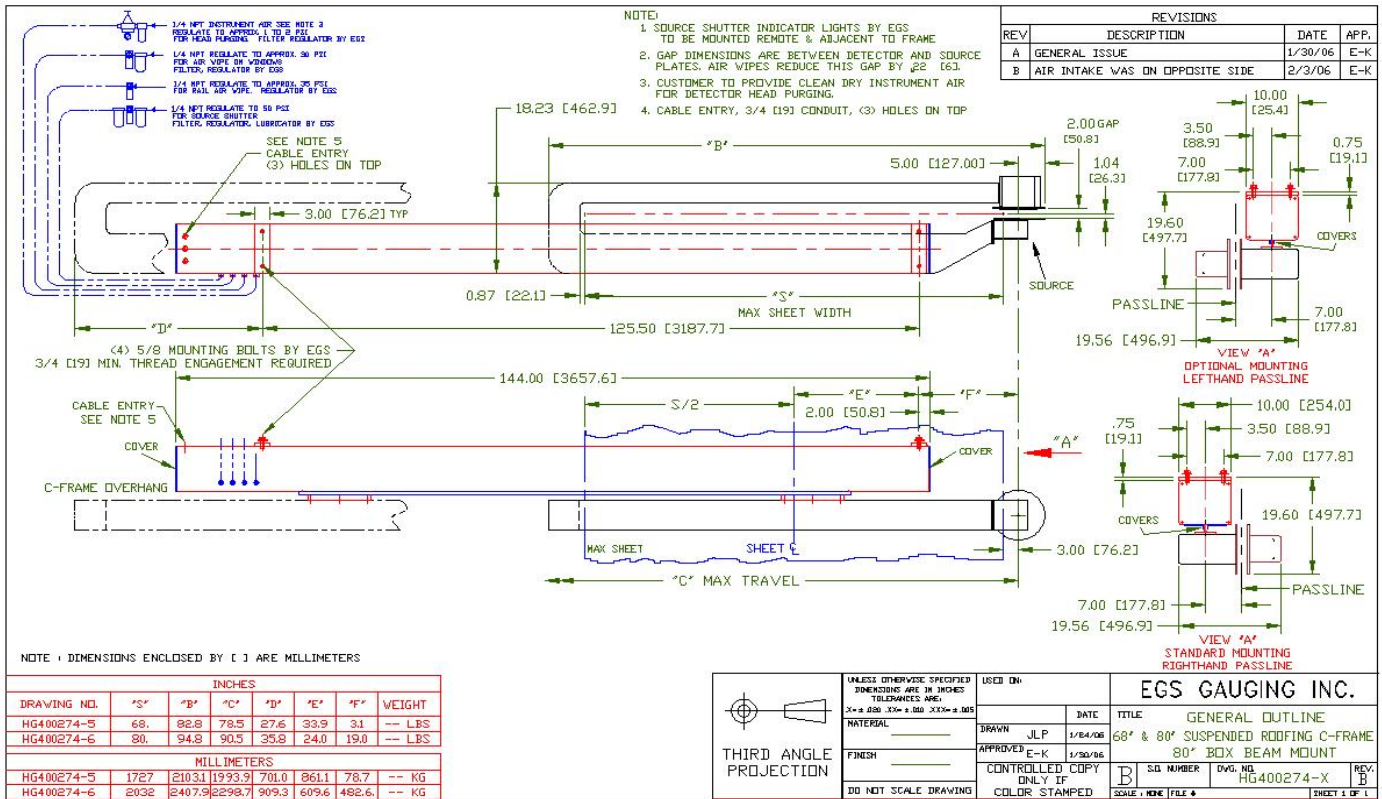
The distributed scanner processor provides local processing for data acquisition and control functions. Data is available on the network for display, control, reporting, and quality certification. The processor is packaged in a NEMA style enclosure to facilitate simple remote installation in a convenient and appropriate location.



FEATURES AND BENEFITS

- Flexible design offers a variety of configurations to suit the application
- Low profile and compact design allows installation in very tight spaces
- Sensors have pneumatic shutters for safety
- Fully retractable sensor provides maximum accessibility and easy maintenance
- C-Frame design ensures permanent source and detector alignment
- The Heavy duty Box Beam retracting mount size is 0.25" x 9 " x 10" (6.6 mm x 228mm x 254 mm)
- Hardened flat rail, cam roller bearings and air wiped rails ensure smooth reliable operation
- One long timing belt, protected inside of a Box Beam retracting mount drives the carriage and C-Frame.
- All drive components, along with switches and encoder are inside of the Box Beam retracting mount and are protected from the environment.
- Modular remote electronics provide reliability and simplify maintenance
- Standard Ethernet interface ensures reliability and simplifies installation
- Remote push buttons and shutter lights allow control from any location
- "Cat Track" cable carriers ensure long, maintenance free- life for cables and hoses and are inside of the Box Beam retracting mount.
- Air wipes ensure clean source and detector windows for optimum performance

THERMO SCIENTIFIC C-FRAME SCANNER HARSH ENVIRONMENT PRODUCT SFH10



Example: Outline drawing of typical suspended Harsh Environment C-Frame.

Note: A wide variety of C-Frame Configurations are available, ask your EGS representative for details.

DESCRIPTION

The proven C-Frame is based on a scanner design element, which were developed and patented over 40 years ago. Many of those early scanners are still in service today and many have been upgraded to the latest digital design, which is a testament to its sound design and easy maintenance. Thousands of these scanning frames have been installed on a wide array of processes, from simple pilot lines to the most severely demanding industrial processes.

The rugged design of the Harsh Environment C-Frame is based on many years of experience in a demanding environment. The Thermo sensor's highly accurate measurement combined with sound performance and simple operation make it a natural choice for harsh environments and abrasive applications.

SPECIFICATIONS

Max. Web Width:	80 in (2032 mm)
Passline Angle:	90°
Sensor Gap:	2 in
Ambient Temp:	170°F (77°C)
Scan Speed:	5.8 in/sec. (Max. 4 Reversals/Minute)
Scan Position Reliability	±0.1 in (±0.24 cm)
Scan Position Feedback:	Optional encoder 7200 pulses /inch
Electrical Requirements:	104-127 VAC 0 Hz ±0.5 Hz

©2007 Thermo Fisher Scientific. All rights reserved. Results may vary under different operating conditions. Specifications, terms and pricing are subject to change. Not all products are available in all countries. Please consult your local sales representative for details.

Thermo
SCIENTIFIC