

THERMO SCIENTIFIC L220 SCANNER

PRODUCT SFL10-XX

The Thermo Scientific L220 scanner is an intelligent modular platform that supports a family of Thermo Scientific web gauging sensors. This rugged, reliable scanner is designed for ease of maintenance and low cost of ownership. Its low profile frame footprint is ideally suited for tight installation spaces.

The entire beam structure is welded; heat treated and precision machined without the need for shimming or rail adjustment. The sensor carriage incorporates linear bearings for smooth, reliable movement and precise sensor alignment along the rails. The rails are environmentally enclosed to protect them from the dirt, humidity and temperature. A steel-reinforced timing belt transports the sensor carriage, while limit switches and a digital encoder accurately control the head position.

Each intelligent scanner features its own dedicated processor for measurement acquisition and data capture. Final measurement values for displays, controls and information are broadcast to other compliant systems across an open Ethernet network. The intelligent measurement architecture also eliminates the requirement for a secondary supervisory computer. This processor is environmentally enclosed within a remote enclosure.

Installation and routine running costs are minimized, as air, water or nitrogen and proprietary cables are not required.

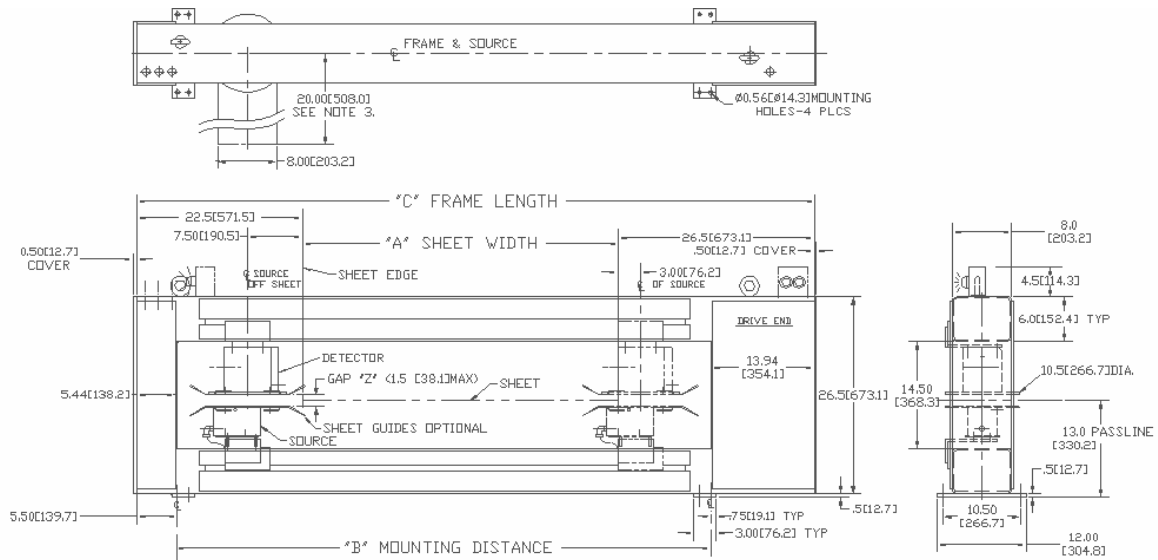
FEATURES AND BENEFITS

- Intelligent measurement provides an efficient, maintainable installation
- Modular electronics reduce the average time to repair and improve overall measurement availability
- Standard Ethernet interface provides open network measurement connectivity
- Environmentally enclosed design protects the internal scanner components
- Precision, stress-relieved structure with machined rail mounts ensures lifetime sensor alignment
- Steel reinforced timing belt provides precise head positioning and high scanner reliability
- Chainflex[®] continuous-flex signal cables provide reliable, high-integrity measurement performance
- Scan speed up to 130mm/sec (5 inches per second)



L220 Scanner Shown with Thermo Scientific ShadowMaster Sensor

THERMO SCIENTIFIC L220 SCANNER PRODUCT SFL10-XX



Dash# Reference	"A" Max Sheet		"B"		"C"		EST.WGT	
	Inches	Millimeters	Inches	Millimeters	Inches	Millimeters	Lbs	Kgs
-1	28.0	711.2	57.5	1460.5	77.0	1955.8	570	258
-2	40.0	1016	69.5	1765.3	89.0	2260.6	630	285
-3	52.0	1320.8	81.5	2070.1	101.0	2565.4	690	313
-4	64.0	1625.6	93.5	2374.9	113.0	2870.2	750	340
-5	76.0	1930.4	105.5	2679.7	125.0	3175	810	367
-6	88.0	2235.2	117.5	2984.5	137.0	3479.8	870	394
Source Type	Gap "Z" (Approx.)							
Krypton-85	.62	15.7						
Strontium-90	1.25	31.7						

Specifications			
Max web width	2236mm (88in)	Ambient temperature	50°C (122°F)
Pass line angle	Horizontal	Dimensions: Machine direction Height Passline	203.2mm (8ins) 673.1mm (26.5in) 330.2mm (13in)
Scan position repeatability	+/- 0.24cm (0.1in)		
Maximum scan speed	130mm/sec (5in/sec)		
Head position resolution	40 pulses/mm (1000 pulses/inch)		
Electrical requirements	104-127Vac, 60Hz +/- 5Hz		

©2007 Thermo Fisher Scientific Inc. All rights reserved. All trademarks are the property of Thermo Fisher Scientific Inc. and its subsidiaries. Results may vary under different operating conditions. Specifications, terms and pricing are subject to change. Not all products are available in all countries. Please consult your local sales representatives for details.