

Isolating Genomic DNA from Whole Blood

CHU Nantes-Hotel Dieu. Institut de Biologie. Laboratoire d'Hématologie – Biologie Moléculaire. Nantes. France
Nadia Boujtita, Ph.D., Thermo Fisher Scientific, Sample Preparation and Separations Applications Scientist

Centrifugation Genomic DNA Isolation Nucleon BACC2 Kit

Abstract

The collection of pure high molecular weight genomic DNA from whole blood or cell cultures is a key starting step for researchers conducting downstream research such as PCR amplification or restriction digests. In this protocol, high purity DNA was collected from the buffy coat layer of human blood from 10 patients for downstream analysis. Using the Nucleon® BACC2 kit, DNA results were analyzed to prove acceptable yield and purity in the Thermo Scientific Sorvall 24-place refrigerated microcentrifuge.

Readily available kits, such as the Nucleon BACC2 from GE® Health Care Europe-Amersham, minimize the need for reagents and consumables. The end-user only has to provide a high quality refrigerated microcentrifuge and pipettes to complete the isolation process. It is important to find a suitable DNA isolation system and to use appropriate equipment to satisfy downstream applications, including enzyme applications and cDNA synthesis.

The 24-place refrigerated microcentrifuge proved to be ideal for use with DNA extraction kits such as the Nucleon BACC2 kit. The successful performance of the new Sorvall 24-place refrigerated microcentrifuge is representative of the entire line of new refrigerated microcentrifuges, which includes the Heraeus Fresco 21R, Sorvall Legend Micro 17R, Sorvall Legend Micro 21R, IEC Micro 17R and IEC Micro 21R.

Materials and Methods

Human blood samples were collected from 10 patients. DNA was extracted from the buffy coat layer, following the instructions included with the Nucleon BACC2 kit (GE Health Care Europe-Amersham). The protocol described in this application note is a summary of the procedure included in the kit manual provided by the manufacturer. Refer to the kit manual for detailed product information and protocols.

All centrifugation steps were performed using the new Sorvall refrigerated microcentrifuge with the standard 24-place 1.5/2.0 ml rotor at 4°C.

Procedure

Cell lysis

1. In a 1.5 ml microcentrifuge tube, resuspend 400 µl of the buffy coat in 1 ml of solution A (sodium perchlorate).
2. Pellet the cells in the refrigerated microcentrifuge's 24-place rotor by centrifuging at 6000 rpm for 5 minutes at 4°C.

3. Discard the supernatant and resuspend the cell pellet 2 or 3 times in 700 µl of solution A (sodium perchlorate).

Deproteinization with sodium perchlorate

4. Discard the supernatant and resuspend the cell pellet in 500 µl of reagent B (chloroform) with brief vortexing.
5. Add 125 µl of sodium perchlorate and invert the tube several times.

Extraction with chloroform and Nucleon resin

6. Add 500 µl of chloroform and invert the tube for 20-30 seconds.
7. Add 150 µl of Nucleon silica and centrifuge at 6500 rpm in the refrigerated microcentrifuge for 3 minutes at 4°C.

DNA precipitation

8. Transfer the upper phase (500 µl) to a fresh 1.5 ml tube and precipitate the DNA with 2 volumes of cold absolute ethanol.
9. Centrifuge at 12,000 rpm in the Thermo Scientific 24-place refrigerated microcentrifuge for 10 minutes at 4°C.



Sorvall Legend Micro 21R Refrigerated
Microcentrifuge

DNA washing

10. Wash the DNA with 1 ml of 70 % cold ethanol.
11. Pellet the DNA again, centrifuging at 12,000 rpm in the Thermo Scientific Sorvall 24-place refrigerated microcentrifuge for 10 minutes.
12. Air dry and resuspend the DNA in TE buffer.

Evaluation of nucleic acid purity

Optical density measurements were used to assay the DNA yield and check for contamination by salts, solvents and proteins. To evaluate the purity of the extracted DNA, absorbance ratios at 260 nm/230 nm (DNA/Organic or carbohydrates contaminants like phenol and other aromatic compounds) and 260 nm/280 nm (DNA/protein) were determined. (A typical yield is 200-400 µg of DNA with a 260/280 ratio of 1.8 to 2.)

Sample ID	Quantity ng/µl	OD 260/280	OD 260/230
Patient 1	476.71	1.87	2.11
Patient 2	534.07	1.88	1.96
Patient 3	546.04	1.88	1.83
Patient 4	791.17	1.92	1.84
Patient 5	805.83	1.91	1.90
Patient 6	611.87	1.89	1.80
Patient 7	695.31	1.90	1.83
Patient 8	533.25	1.87	1.88
Patient 9	562.41	1.87	1.84
Patient 10	648.24	1.90	1.83

Table 1. Optical density measurements achieved using the Nucleon BACC2 kit and the Sorvall 24-place refrigerated microcentrifuge.

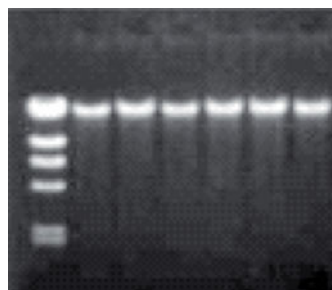


Figure 1. DNA isolated from human blood following the Nucleon protocol kit and using the Thermo Scientific Sorvall 24-place refrigerated microcentrifuge. DNA was separated on a 1 % agarose gel. Lane 1 contains 1x Hind III molecular weight markers, lanes 2-7 contain samples.

Results

Evaluation of DNA purity

Optical density measurements were taken after DNA extraction using the Nucleon BACC2 kit and the Sorvall 24-place refrigerated microcentrifuge. An OD 260/280 ratio of 1.8 to 2 and an OD 260/230 ratio of 1.8 or greater indicate that good quality DNA was obtained (see Table 1, Figure 1). Pure DNA is then ready for downstream processes.

Conclusion

High yield, high purity DNA was obtained from human blood using the Nucleon BACC kit system with the Sorvall refrigerated microcentrifuge and 24-place rotor. DNA prepared in this way is ready to be digested with restriction endonucleases and has been employed for DNA profiling and real-time PCR.

The user-friendly the Sorvall 24-place refrigerated microcentrifuge proved to be an outstanding performer for constant stable refrigeration and is recommended for all laboratories using standard methods or kits for isolation of genomic DNA or other kit protocols.

References

GE Health Care Europe-Amersham; Product Codes RPN 8501, 8502 or 8512; Nucleon BACC, *Genomic DNA from Blood and Cell Cultures* publication number 18-1146-65, Rev 1.

In addition to these offices, Thermo Fisher Scientific maintains a network of representative organizations throughout the world.

North America:

USA / Canada
+1 866 984 3766

Europe:

Austria
+43 1 801 40 0

Belgium
+32 2 482 30 30

France
+33 2 2803 2000

China
+86 21 6865 4588 or
+86 10 8419 3588

Germany national toll free
08001-536 376

Germany international
+49 6184 90 6940

Italy
+39 02 02 95059 434-254

Netherlands
+31 76 571 4440

Nordic countries
+358 9 329 100

Russia / CIS
+7 (812) 703 42 15

Spain/Portugal
+34 93 223 09 18

Switzerland
+41 44 454 12 12

UK/Ireland
+44 870 609 9203

Asia:

China
+86 21 6865 4588 or +86 10 8419 3588

India
+91 22 6716 2200

Japan
+81 45 453 9220

Other Asian countries
+852 2885 4613

Countries not listed
+49 6184 90 6940 or +33 2 2803 2000

© 2008 Thermo Fisher Scientific Inc. All rights reserved. GE is a registered trademark of General Electric Company. Nucleon is a registered trademark of Tepnel Life Sciences PLC. All other trademarks are the property of Thermo Fisher Scientific Inc. and its subsidiaries. Specifications, terms and pricing are subject to change. Not all products are available in all countries. Please consult your local sales representative for details.

www.thermo.com/centrifuge