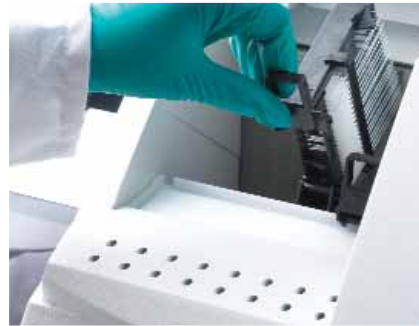


## Safety First and Foremost

To prevent mishaps, Shandon ClearVue is non-operational when any of its doors are open. If power is interrupted, battery backup completes basket coverslipping.



### Downdraft Ventilation

When unloading slide baskets, the coverslipper protects users from harmful vapors with downdraft ventilation.



### Charcoal Filter

A charcoal filter provides added security by removing vapors before they escape.



### Removable Debris and Purge Trays

Shandon ClearVue's removable debris and purge trays allow for easy clean up of excess mountant or broken glass.

## Thermo Scientific Shandon ClearVue Specifications

| Description  | Unit Size                 | Order Number |
|--|---------------------------|--------------|
| Shandon ClearVue Coverslipper                        | 1                         | A79200001    |
| <b>Included With Product:</b>                        |                           |              |
| Side loading basket (black slider—Gemini compatible) | 3/pkg.                    |              |
| Transfer head suction cup                            | 3/pkg.                    | A79210081    |
| Drying basket stand for 5 baskets                    | 1                         | A79210056    |
| Coverslip Hoppers - 24mm x 50mm #1.5                 | 2/pkg. 500 coverslips ea. | A79210051    |
| Purge trays (Hopper end-caps)                        | 2/pkg.                    | A79230239    |
| Mainslead US, UK, EU                                 | 1                         |              |
| Filter   | 1 ea.                     | 9990610      |
| Debris Tray  | 1                         | A79230198    |
| Brush flat head soft hair                            | 1                         | P12257       |
| Filler cap removal tool                              | 1                         | A79230259    |
| Safety and warranty booklet                          | 1                         | A79910001    |
| Set-up guide and unpacking guide                     | 1                         | A79210110    |
| Quick reference cards                                | 1                         | A79210120    |
| User Guide   | 1                         | A79210100    |

**Dimensions:** (D x W x H): 22.75" x 25.5" x 19.75" (57.5 x 64.5 x 50cm)

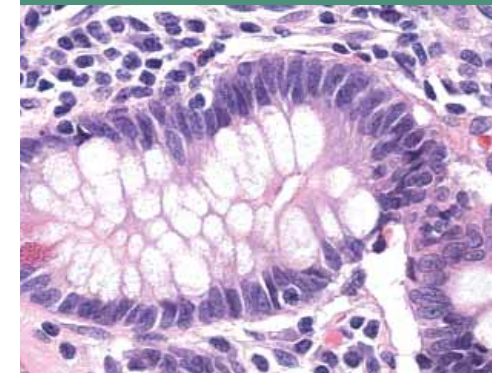
**Weight:** 110lbs (50kg)

**Power Requirements:** 100-240Vac, 50/60Hz, 300VA

| Available Accessories  | Unit Size                  | Order Number |
|--|----------------------------|--------------|
| ClearVue baskets w/black sliders (Varistain Gemini compatible) | 5/pkg.                     | A79210064    |
| ClearVue baskets w/white sliders (Varistain Gemini compatible) | 5/pkg.                     | A79210065    |
| ClearVue baskets w/black sliders (Sakura DRS 2000 compatible)  | 5/pkg.                     | A79210066    |
| ClearVue baskets w/white sliders (Sakura DRS 2000 compatible)  | 5/pkg.                     | A79210067    |
| ClearVue basket hangers (Sakura DRS 2000 compatible)           | 5/pkg.                     | A79210068    |
| ClearVue baskets w/black sliders (Varistain V24-4)             | 5/pkg.                     | A79210069    |
| ClearVue baskets w/white sliders (Varistain V24-4)             | 5/pkg.                     | A79210070    |
| Conversion kit for Varistain V24-4                             | 1 kit                      | A79210071    |
| ClearVue baskets w/black sliders (Leica compatible)            | 5/pkg.                     | A79210072    |
| ClearVue baskets w/white sliders (Leica compatible)            | 5/pkg.                     | A79210073    |
| Shallow load tray for loading baskets (w/lid)                  | 1                          | A79210092    |
| Drying basket stand for 5 baskets                              | 1                          | A79210056    |
| Filter   | 1 ea.                      | 9990610      |
| Charcoal filters   | 6/pack                     | 7411258      |
| Extraction kit   | 1 ea.                      | A79210080    |
| Soft hair brush  | 1 ea.                      | P12257       |
| Suction cups   | 3/pkg.                     | A79210081    |
| Coverslip Hoppers - 24mm x 40mm #1.5                           | 2/pkg. 500 coverslips ea.  | A79210050    |
| Coverslip Hoppers - 24mm x 50mm #1.5                           | 2/pkg. 500 coverslips ea.  | A79210051    |
| Coverslip Hoppers - 24mm x 55mm #1.5                           | 2/pkg. 500 coverslips ea.  | A79210052    |
| Coverslip Hoppers - 24mm x 40mm #1.0                           | 2/pkg. 500 coverslips ea.  | A79210053    |
| Coverslip Hoppers - 24mm x 50mm #1.0                           | 2/pkg. 500 coverslips ea.  | A79210054    |
| Coverslip Hoppers - 24mm x 40mm #1.5                           | 20/pkg. 500 coverslips ea. | A79210074    |
| Coverslip Hoppers - 24mm x 50mm #1.5                           | 20/pkg. 500 coverslips ea. | A79210075    |
| Coverslip Hoppers - 24mm x 55mm #1.5                           | 20/pkg. 500 coverslips ea. | A79210076    |
| Coverslip Hoppers - 24mm x 40mm #1.0                           | 20/pkg. 500 coverslips ea. | A79210077    |
| Coverslip Hoppers - 24mm x 50mm #1.0                           | 20/pkg. 500 coverslips ea. | A79210078    |
| ClearVue Mount   | 16oz                       | 4211         |
| ClearVue Mount XYL   | 16oz                       | 4212         |

© 2007 Thermo Fisher Scientific Inc. All rights reserved. Sakura DRS™ 2000 is a trademark of Sakura Finetek, Inc. All other trademarks are the property of Thermo Fisher Scientific Inc. and its subsidiaries.

# Thermo Scientific Shandon ClearVue™ Makes Coverslipping Workflow Perfectly Clear



### Unique Coverslipping Technology



optical recognition   specimen recognition   load-on-demand   compatibility   safety

Anatomical Pathology Americas

1-800-522-7270  
(269) 372-2674 fax

M48000 R9/07

Anatomical Pathology International

0800 0189396 +44 (0) 1928 562501  
+44 (0) 1928 562627 fax

[www.thermo.com/pathology](http://www.thermo.com/pathology)

**Thermo**  
SCIENTIFIC

Part of Thermo Fisher Scientific

**Thermo**  
SCIENTIFIC

## Intelligent Enough to See Past Workflow Obstacles

### Intelligence Meets Versatility

Finally, there's a laboratory product that is truly different than all the others. The Thermo Scientific Shandon ClearVue boasts unique technology to solve the workflow hassles facing laboratories today. It all starts with the way this advanced instrument begins the coverslipping process. All you do is place a basket of slides onto the load rail and close the door. It's that simple—and Shandon ClearVue does the rest, delivering the speed and precision your busy lab demands.



## It's All in a Day's Work with Shandon ClearVue Coverslipper!

### Load-on-Demand

#### Manages up to 11 Slide Baskets

In an active laboratory, staining and coverslipping workflow patterns constantly change. The Shandon ClearVue has load-on-demand capabilities that can manage up to 11 slide baskets simultaneously. Baskets can be loaded one at a time or up to five baskets together—worry-free.



### Compatibility

#### Harmony Can Exist in the Lab

Most laboratories use a range of equipment with no clear-cut way to make everything work in harmony. The Shandon ClearVue offers compatibility with a variety of stainers to accommodate just about any lab setting. This coverslipper accepts slides from the Shandon Varistain® Gemini ES, Shandon Varistain® 24-4, Sakura DRS™ 2000 and Leica Auto-Stainer. Slide baskets from any of these stainers may be loaded into the Shandon ClearVue in a mix-or-match fashion.



### User-Friendly Touch-Screen Panel

#### So Simple, It's Smart

The Shandon ClearVue offers a smart user-interface from a touch-screen panel making interaction simple. The software monitors the type of slide preparation, size and number of slips dispensed, as well as the number of slide baskets waiting for coverslipping. Plus, the disc drive has the ability to download technical information and perform necessary software updates.



## Meeting the Demands of Perfection

### Create the Perfect Coverslipped Slide

#### Sensors Ensure Proper Positioning

Laboratories demand perfection. The Shandon ClearVue has several features to create the perfect coverslipped slide. In preparing the sample for coverslipping, Shandon ClearVue has sensors to ensure proper positioning of the slide. Vacuum and pressure are then applied to quickly and accurately mount the cover glass. To protect slide grippers and the prep area, the mountant is also dispensed consistently for no spills—and no mess.

### Optical Recognition

#### Recognizes Each Slide Position

Every slide is optically recognized during coverslipping so there are no illusions or improperly handled slides.

With a set of meticulous slide-grippers, Shandon ClearVue removes each slide for coverslipping and returns each slide back to the same basket upon completion. If spaces between slides exist, this intuitive coverslipper will maintain proper positioning as when the basket was first loaded.

### Specimen Recognition

#### Recognizes Cytology and Histology Samples

Shandon ClearVue automatically identifies and delivers the correct level of mountant for diverse slide preparations through specimen basket recognition. This dynamic coverslipper can process both histology and cytology samples at the same time, without user interaction.



### Pre-Loaded Coverslip Hoppers

#### Now, Time is on Your Side

By accepting pre-loaded coverslip hoppers, the Shandon ClearVue rapidly gets the job done, so you can move on to your next task. For effortless integration into your laboratory, each hopper accurately dispenses 500 slips. At last, time is on your side—just insert the hopper, close the door and walk away.

