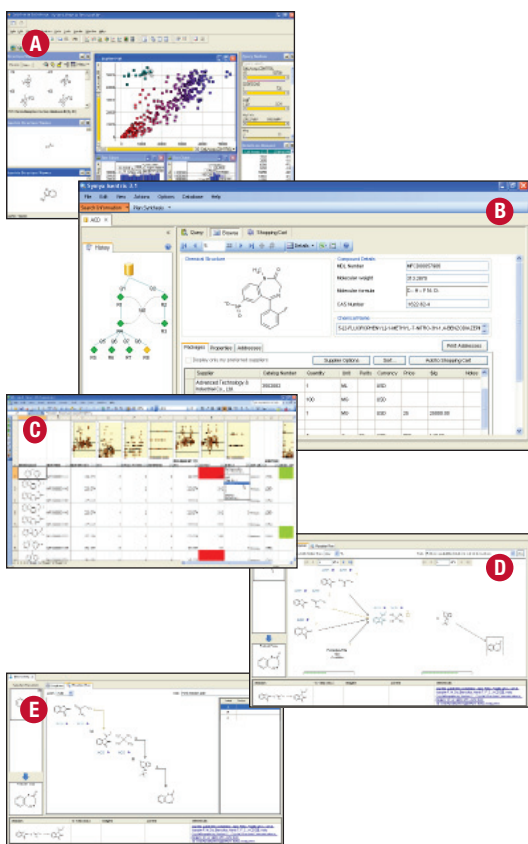


A complete, out-of-the-box solution for searching, browsing, organizing, analyzing, and reporting on data and information used in R&D organizations. By leveraging enterprise, laboratory, and local information, decision support software fosters improved innovation and smarter experimentation, driving costs down and productivity up.

Thermo Scientific

Symyx ISENTRIS Decision Support Software

Figure 1: With ISENTRIS, organizations can utilize TIBCO® Spotfire® DecisionSite® visualizations (A) and customized views of project data (B). Scientists can convert data to SAR tables (C) and rapidly generate synthesis pathways using the reaction planner (D and E).



We are now able to offer customers decision support and reporting software that enables scientists to explore and report on information from corporate, commercial, and local databases. On average, scientists spend 7-8 hours a week collating and reporting information. ISENTRIS reduces this time, enabling scientists to focus on lab work.

With ISENTRIS, scientists can easily explore information within or across experiments and experimental procedures. Integrating related information with experimental results speeds decision making, as ISENTRIS pushes information to scientists. By enabling scientists to reuse and fully leverage information, ISENTRIS supports better experimental design, fewer repeated experiments, and greater success in less time.

Information access and reporting for scientists

- Search simultaneously over structured and unstructured data such as LIMS, ELN repositories, document stores, corporate databases, and information warehouses
- Speed data exploration and reporting with easy-to-use query and browse forms
- Combine and compare information from multiple experiments using dynamic drag-and-drop table views and reports

- Present and report data the way you want with pivoting, image displays, live graphs, and ad hoc calculations
- Augment your data exploration and reporting with added information including chemical, formulation and reaction content
- View summary results, then rapidly drill down to related information
- Share search strategies and reports with colleagues
- Report results to HTML, Adobe® PDF and Microsoft® Word, PowerPoint and Excel with ease

Ease-of-use for administrators

- Single decision support tool for the enterprise
- Highly configurable forms with no need for report templates
- Automatic data view creation and maintenance
- Configurable and extensible for different data sources
- Centrally deployable configurations
- WAN support enabling data center consolidation

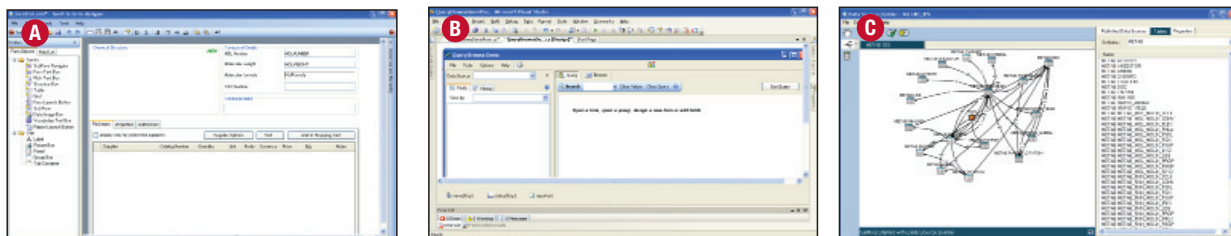


Figure 2: Isentris provides extensive application development capabilities using standard tools (A), rich and extendable form design (B) and the ability to configure data source views using a graphical user interface (C).

Flexibility for developers

- Fully documented API
- Standard development technologies (.NET and Java)
- Support for developing Web and smart client applications
- Support for Web Services
- Chemical business rules and calculations interfaces

Isentris components

- Symyx Isentris client
- Isentris for Excel
- Isentris controls
- Symyx Cheshire
- Symyx Direct
- Symyx Draw
- Symyx Core Interface

Unparalleled chemistry support

Using Symyx Draw, scientists can quickly draw precise chemical structures and reactions and create publication-quality graphics. Using Symyx Cheshire, administrators can standardize structure queries, displays, and registration. The Symyx Direct chemistry data cartridge enables researchers to search and register molecules and reactions in Oracle® databases, assuring immediate, anytime access to consistent chemistry data. Symyx Direct has been tested and proven on databases with over five million reactions; molecule searching has been tested and proven on databases of over 27 million structures. The cartridge's unsurpassed chemistry capabilities include full reaction transformation searching, enhanced chemical representation of tetrahedral and geometric stereogenic centers and support for polymers, mixtures, and complex formulations.

Integrating data enterprise-wide

Our chosen solution for decision support enables scientists to view information as they want to, independent of the underlying data organization. Scientists can explore information from multiple sources simultaneously, for example, from a LIMS, ELN, and chemical inventory. This is achieved with a Data Source service that connects information from across the organization and presents it to researchers in more meaningful ways. Researchers can access information from different sources and services in a highly interactive manner that accelerates finding, analyzing and reporting relevant records.

Partnering with Thermo Fisher Scientific

Thermo Fisher Scientific, the worldwide leader in laboratory informatics software and services, has partnered with Symyx Technologies to offer its customers Symyx Notebook and Symyx Isentris. These solutions are part of our comprehensive portfolio of Thermo Scientific Informatics software solutions, including Watson LIMS™ for pharmaceutical, biotech and CRO organizations; Galileo LIMS™ for in vitro ADME studies in early stage discovery and development; Nautilus LIMS™ for discovery and R&D, particularly in biotechnology; SampleManager LIMS™ for process industries; Darwin LIMS™ for pharmaceutical QA/QC; Atlas CDS™, an enterprise chromatography data system that tightly integrates with LIMS; and GRAMS spectroscopy analysis software.

For More Information

Email us at marketing.informatics@thermofisher.com, visit us on the web at www.thermo.com/informatics or call +1 866-463-6522 (US) or +44 161 942 3000 (Intl).

© 2009 Thermo Fisher Scientific Inc. All rights reserved. Symyx, the Symyx logo, and Isentris are registered trademarks of Symyx Solutions, Inc. TIBCO® Spotfire® DecisionSite® is property of TIBCO Software Inc., Adobe® PDF is property of Adobe Systems, and Microsoft® Word, PowerPoint and Excel are property of Microsoft Corporation. All other trademarks and copyrights are the property of Thermo Fisher Scientific Inc. and its subsidiaries.

ISENTRIS0709