

The Thermo Scientific Ramsey PC Master is a flexible human-machine interface designed to collect and integrate data from any applicable device, and to display it in a simple, recognizable, schematic form. From a few devices to an entire plant, Ramsey PC Master provides the reach you need to control your operation without leaving your desk.

## Thermo Scientific Ramsey™ PC Master

Extending Your Reach



### Other Thermo Scientific Covered Devices

- Belt Scale Integrators
  - Ramsey Micro-Tech 2000 Series Integrators*
  - Ramsey Micro-Tech 3000 Series Integrators*
  - Ramsey Micro-Tech Mini 10-101 Series Integrators*
- Continuous Level Indicators
  - Digital Ramsey C-Level*
  - Ramsey BOB II*
  - Ramsey Sonic PCT (Multi-Drop) Transducers*
- Other Devices
  - Ramsey Oretronic III Tramp Metal Detectors*
  - Spectra-Quad™ Online Moisture and Constituent Analyzers*
  - Devices with Modbus interface by special arrangement*

Information. It's the key to keeping systems operating at peak efficiency. While today's automated bulk systems are powerful information generators, that information is only useful if it is in the right place and in the right form. The Thermo Scientific Ramsey PC Master puts the information you need at your fingertips—not the information that someone else has chosen, but your information in your format.

### Sophisticated but Simple

Getting started with Ramsey PC Master is easy. Your customized system comes on a self-installing CD that runs on a Windows®-based PC. It arrives pre-configured for the equipment you are using, with layouts and an information hierarchy already in place. Once you get the CD, you can be up and running in only a few hours.

### Designer Sub-Program

In addition to the initial custom configuration, the system's designer sub-program allows users to create their own screens using a simple drag-and-drop feature. Individual properties, along with their display characteristics, are selected from an extensive list and placed on the screen. Once created, the user-defined display can be accessed at will.

### Feature-Rich Design

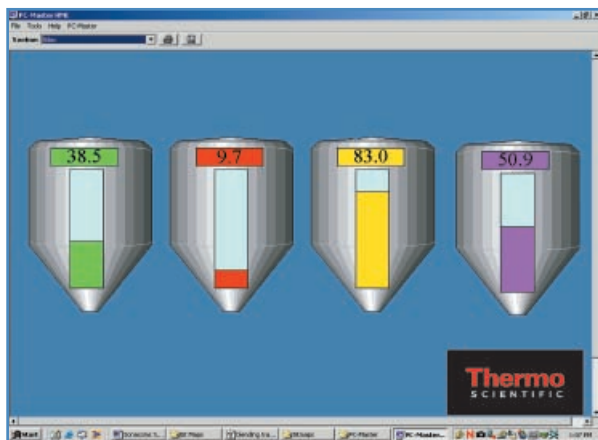
The installed system includes a detailed graphical layout of your equipment, complete with key data updated in real time. This provides a “big picture” view of your operation, making it easy to keep an eye on your ongoing operations. Data displayed in this view can include modes, rates, totals, set points, deviations and more. The Thermo Scientific Remote Scale Monitor (RSM) duplicates the front panel of compatible devices on-screen, allowing complete hands-on monitoring and control from a central location.

The system’s data logger feature collects data, keeping running totals and event logs for each of the covered devices. These data logs run continuously and maintain both current and historical data, and can be checked at will. Over time, the system can also chart trends to help identify the effects of changes in the system or to spot emerging problems. Clear, simple graphs provide information in only a few seconds, which otherwise might take hours to find in a purely numerical presentation. The ticket and reporting feature allows data to be printed for circulation. The system provides a control hierarchy using passwords to identify and differentiate between those with supervisor-level access and those with operator-level access.

### Tier 1 Software

The Ramsey PC Master’s Tier 1 software is designed for simple weighing or level indication applications of one to 30 same-type devices and includes the following:

- A self-installing CD with customized application data and graphics
- Data logger to record totals, rate, level and other pertinent data
- Trend chart designed to show desired variable history
- Print ticket to customer’s requirements
- RSM (Remote Scale Monitor) for Ramsey Micro-Tech 2000 or 3000 integrator applications
- Ramsey Sonic PCT multi-drop applications (cannot mix with other devices)
- Ramsey BOB II multi-drop applications (cannot mix with other devices)



Tier 1 — Ramsey Sonic PCT (Multi-Drop) Application



Tier 1 — Remote Scale Monitor (RSM) Application



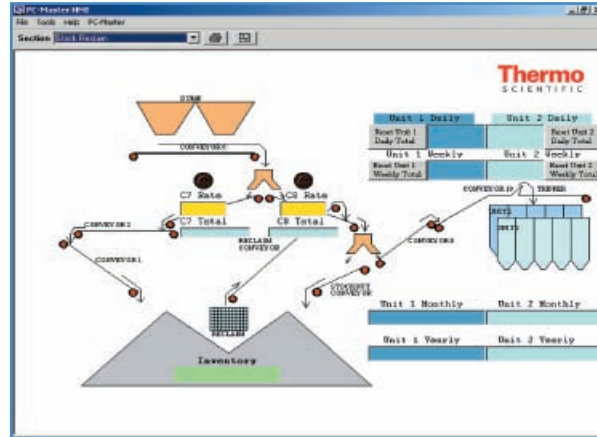
### Tier 2 Software

The Ramsey PC Master's Tier 2 software is designed for complex weighing and/or level indication applications from one to 30 same-type devices per communications port, or up to a total of 90 devices on three separate communications ports. It includes the following:

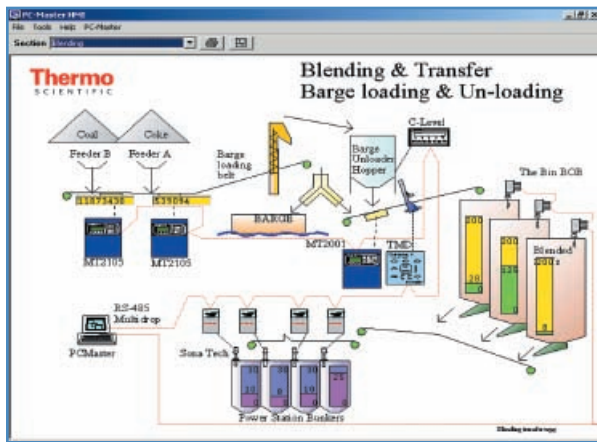
- A self-installing CD with customized application data and graphics
- Data logger to record totals, rate, level and other pertinent data
- Trend chart designed to show desired variable history
- Print ticket to customer's requirements
- RSM (Remote Scale Monitor) for Ramsey Micro-Tech 2000 or 3000 integrator applications
- NTEP logging system
- Ramsey Sonic PCT multi-drop applications (can mix with other devices)
- Ramsey BOB II multi-drop applications (can mix with other devices)
- Auto-call, fax, page and e-mail

Tier 2 Ramsey PC Master software meets all the requirements of HB44 for recording flow rate, printing tons, audit trails and alarms. Multiple screens display rate, tons and alarms for the entire consignment. The data is stored in a spreadsheet for future use.

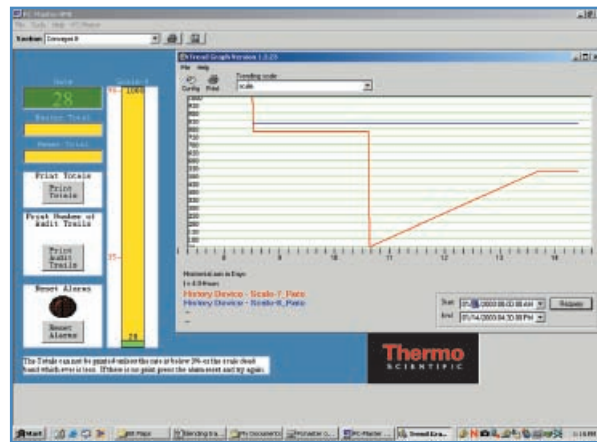
Tier 2 can operate more than one certified belt scale, which offers hardware savings. Tier 2 software can reside in a stand-alone PC/printer arrangement or operate in the background on a multi-task PC.



Tier 2 — Inventory Management System



Tier 2 — Belt Scales, Tramp Metal Detectors and Continuous Level Products

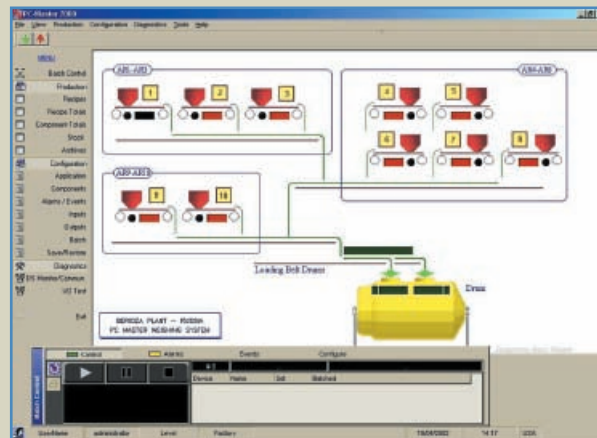


Tier 2 — NTEP (National Type Evaluation Program) Logging System

### Tier 3 Software

The Ramsey PC Master's Tier 3 software is designed for complex weighing and/or level indication applications where monitoring and/or controlling one to 30 devices per communications port, or up to a total of 90 devices on three separate communications ports, is required. It includes the following:

- Control of batching and blending applications
- Other manufacturers' devices with Modbus communications
- Special applications that require new drivers for any new device
- A self-installing CD with customized application data and graphics
- Data logger to record totals, rate, level and other pertinent data
- Trend chart designed to show desired variable history
- Print ticket to customer's requirements
- RSM (Remote Scale Monitor) for Ramsey Micro-Tech 2000 or 3000 integrator applications
- Ramsey Sonic PCT multi-drop applications (can mix with other devices)
- Ramsey BOB II multi-drop applications (can mix with other devices)
- Auto-call, fax, page and e-mail

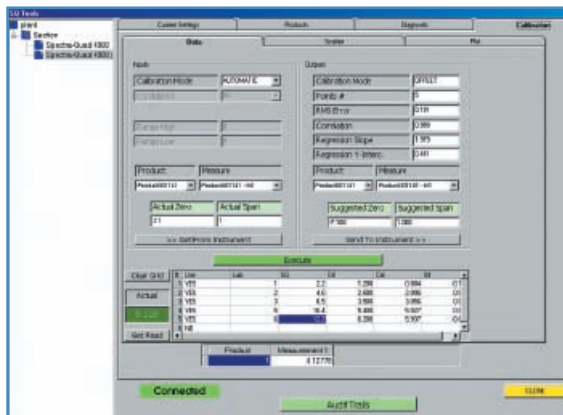


Tier 3 — Blending Control

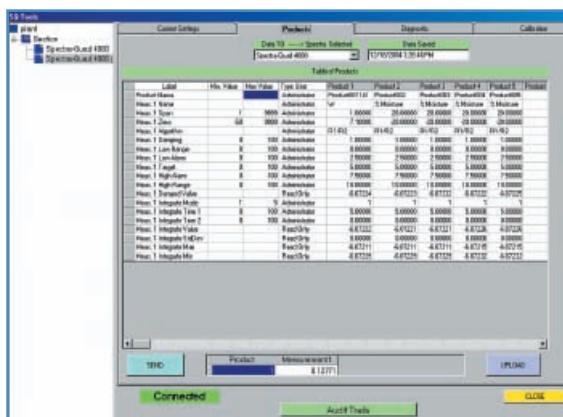
## Ramsey PC Master Software for Spectra-Quad Analyzers

The Ramsey PC Master's Spectra-Quad software is designed for monitoring, configuring and calibrating multiple Spectra-Quad online moisture and constituent analyzers in a plant. It provides access to all Spectra-Quad setup and calibration menus without having to use the data box. The software includes the following:

- Self-installing CD with customized application data and graphics
- Communication with the Spectra-Quad via Ethernet
- Easy access to product configuration and diagnostics information
- Ability to upload and download calibration information
- Graphical display of calibration results
- Audit trail of changes made to each Spectra-Quad device
- Ability to transfer product set-up information between multiple units



**Spectra-Quad — Calibration Screen**



**Spectra-Quad — Software Product Set-up Interface**

## Thermo Scientific Ramsey PC Master

### Putting Information to Work

Data can be communicated from individual devices to the Ramsey PC Master system over distances of up to 5,000 feet via cable or radio modem, but bringing data from multiple devices to a single location is just the beginning. The system can keep tabs on pre-set alarm levels and notify operators via printer, e-mail, fax or pager when the alarm thresholds have been reached. Thresholds can also be used to automatically generate material orders when pre-set supply levels are reached.

The system uses industry-standard data structures. This allows data to be exported to popular databases and spreadsheet platforms for use in enterprise-wide resource management. And, because the system is compatible with standard communication protocols, data can be easily shared via e-mail, fax, LAN or Internet.

### Designed for Change

Collected data can be a valuable tool both for day-to-day management and for improving operations over time. The Ramsey PC Master system acts as an extension of its human managers, keeping full-time watch on operations. Emerging problems can be identified and rectified before they affect operations, and trends that would otherwise go unnoticed can be incorporated into medium and long-term planning. The system acts as management's eyes and ears, and assumes many of the clerical functions that might otherwise take up valuable staff time.

But the Ramsey PC Master is not just an agent of change; it is also designed to evolve with your system. As you add devices or reconfigure your operations, it will adapt to the new configurations. This will keep you in control no matter how large or complex your system grows, providing maximum return on your equipment investment.

### Minimum System Requirements

- PC computer with a Pentium® III or better processor
- 800 MHz processor
- 10 GB hard drive
- Microsoft® Windows 2000, Windows NT or Windows XP operating system
- 128 MB RAM
- Open serial ports
- CD-ROM drive
- Microsoft-compatible mouse

© 2008 Thermo Fisher Scientific Inc. All rights reserved. Microsoft and Windows are registered trademarks of Microsoft Corporation. Pentium is a registered trademark of Intel Corporation or its subsidiaries in the United States and other countries. All other trademarks are the property of Thermo Fisher Scientific Inc. and its subsidiaries. Results may vary under different operating conditions. Specifications, terms and pricing are subject to change. Not all products are available in all countries. Please consult your local sales representatives for details. Literature Code PI.8010.0408

Australia  
+61 (0) 8 8208 8200  
+61 (0) 8 8234 3772 fax  
Canada  
+1 (905) 888-8808  
+1 (905) 888-8828 fax  
Chile  
+56 (0) 2-335-3388  
+56 (0) 2-335-1590 fax  
China  
+86 (0) 21 6865 4588  
+86 (0) 21 6445 7830 fax

Germany  
+49 (0) 208-824930  
+49 (0) 208-852310 fax  
India  
+91 (20) 6626 7000  
+91 (20) 6626 7001 fax  
Italy  
+39 02-959514-1  
+39 02-953200-15 fax  
Netherlands  
+31 (0) 76-579-5555  
+31 (0) 76-571-4958 fax

Poland  
+48 (0) 22 651 7530  
+48 (0) 22 651 7535 fax  
South Africa  
+27 (0) 11-609-3101  
+27 (0) 11-609-3110 fax  
Spain  
+34 (0) 91-484-5965  
+34 (0) 91-484-3597 fax  
United Kingdom  
+44 (0) 1788-820300  
+44 (0) 1788-820301 fax

United States  
+1 (800) 227-8891  
+1 (763) 783-2525 fax  
+1 (763) 783-2500 direct

[www.thermo.com/bulk-handling](http://www.thermo.com/bulk-handling)

**Thermo**  
SCIENTIFIC