

**Thermo Scientific Savant SPD1010 and  
SPD2010 SpeedVac® Concentrators**

**Integrated solutions for  
general-purpose applications**



# Thermo Scientific Savant SPD1010 and SPD2010 SpeedVac Concentrators

## Integrated Solutions for General-purpose Applications

In a busy biomolecular research lab, equipment must be designed to support multiple users, numerous protocols, and continuous operation. In this demanding environment, ease of use and reliable performance are essential considerations.

Our Thermo Scientific Savant SPD1010 and SPD2010 SpeedVac concentrators bring a new level of simplicity to general-purpose vacuum concentration. These fully integrated systems support the rapid, efficient

concentration of aqueous and mild organic solvent-based samples in biomolecular research applications.

Combining versatility and ease of use in a compact footprint, these low-maintenance systems are the ideal solution for busy life science, hospital and government research labs.

### Compact Design with 'Plug and Play' Simplicity

Our Savant SPD1010 and SPD2010 SpeedVac concentrators are fully-integrated systems that are easy to install and simple to maintain. Their all-in-one design combines concentrator, pump and cold trap within a compact, stand-alone unit that occupies a minimum of bench space and fits easily inside a standard fume hood.

### Outstanding Versatility

Our SPD1010 and SPD2010 concentrators are available in two capacity ranges to accommodate either high- or low-volume processing. Over 50 rotors are available for both the small-capacity SPD1010 and the large-capacity SPD2010. Supported sample formats range from tubes, vials and microplates to large-volume flasks.

The SPD2010 adds even greater versatility with a 4-position block rotor, which can be equipped with a choice of more than 25 different rotor blocks. Both systems can be equipped with a chemical trap for concentrating oligonucleotides and radioactive samples.

The RH40-12 rotor for our SPD1010 concentrator accommodates (40) 1.5 - 2.0 mL microcentrifuge tubes, or (40) 12 x 75 mm tubes.



Microplate rotors support both shallow and deepwell microplates.



### Key Applications

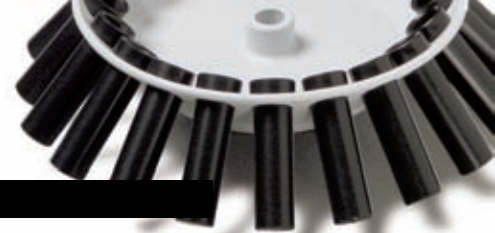
- DNA/RNA
- Proteomics
- Metabolite research
- Drug and forensics testing
- Environmental sampling

Our SPD1010 and SPD2010 SpeedVac concentrators combine intuitive controls with bright displays for easy, one-touch operation.



# Thermo Scientific Savant SPD1010 and SPD2010 SpeedVac Concentrators

## Rotor Selection Guide



### Specifications

	Working Volume (ml)	No. of Tubes	Description	SPD1010	SPD2010	Rotor Model
Microcentrifuge Tubes	1.2 - 1.6	40	1.5 - 2.0 ml	•		RH40-11
	1.2 - 1.6	64	1.5 - 2.0 ml	•		RH64-11
	1.2 - 1.6	120	1.5 - 2.0 ml	•		RH120-11
	1.2 - 1.6	200	1.5 - 2.0 ml		•	RH200-12
Glass and Plastic Tubes	0.3	100	0.5 ml (8 x 29 mm)	•		RH100-8
	0.3	40	0.4 ml (6 x 50 mm)	•		RH40-6
	0.3	100	0.4 ml (6 x 50 mm)	•		RH100-6
	4	20	12 x 75 mm	•		RH20-12
	4	40	1.5 - 2.0 (12 x 75 mm)	•		RH40-12
	4	72	12 x 75 mm	•		RH72-12
	4	200	12 x 75 mm		•	RH200-12
	8	10	13 x 100 mm	•		RH20-12
	8	32	13 x 100 mm	•		RH32-13
	8	118	13 x 100 mm		•	RH200-12
	12	48	16 x 125 mm		•	RH48-18-125
	10	96	16 x 100 mm		•	RH96-16-100
	12	88	16 x 125 mm (for SUMAX)		•	RH88-16-125S <sup>1</sup>
	12	88	16 x 125 mm (for UMA)		•	RH88-16-125U <sup>2</sup>
	10	60	17 x 100 mm, 16 x 100 mm		•	RH60-17-100
	15	8	17.5 x 102 mm, 15 ml Corex <sup>®</sup> tubes	•		RH8-17.5
	10	8	18 x 100 mm, 17 x 95 mm, 16 x 100 mm	•		RH8-18
	15	48	18 x 125 mm		•	RH48-18-125
	24	4	18 x 150 mm	•		RH4-18-150
	24	6	18 x 150 mm		•	RH6-18-150
	30	6	25 x 105 mm, 30 ml Corex <sup>®</sup> tubes	•		RH6-25
	40	12	28 x 150 mm		•	RH12-29
Centrifuge Tubes	12	10	15 ml conical (16 x 120 mm)	•		RH10-15
	12	30	15 ml conical (17 x 120 mm)		•	RH60-17-100
	12	52	15 ml conical (16 x 120 mm)		•	RH52-15
	40	6	50 ml conical (28 x 115 mm)	•		RH6-50
	40	12	50 ml conical (28 x 115 mm)		•	RH12-29
	40	26	50 ml conical (28 x 115 mm)		•	RH26-50
	40	48	50 ml conical (28 x 115 mm for SUMAX)		•	RH48-50S <sup>1</sup>
	40	48	50 ml conical (28 x 115 mm for UMA)		•	RH48-50U <sup>2</sup>
Flasks	35	8	50 ml pear-shaped flask	•		RH8-50 <sup>†</sup>
	80	4	100 ml pear-shaped flask	•		RH4-100 <sup>††</sup>
	80	8	100 ml pear-shaped flask		•	RH8-200 <sup>††</sup>
	200	6	250 ml pear-shaped flask		•	RH6-400 <sup>††</sup>
	400	4	500 ml pear-shaped flask		•	RH4-500 <sup>††</sup>
	80	8	100 ml recovery flask		•	RH8-100 <sup>†</sup>
Vials	2	60	12 x 32 mm	•		RH60-12-40
	3.0	192	1 dram vial (4 ml)		•	RH192-15
	3.7	96	1 dram vial (4 ml)		•	RH96-15-62
	2.0	60	12 x 40 mm vials	•		RH60-12-40
	2.4	12	20 x 47 mm v-vials	•		RH12-20
	3	24	1 dram vials (15 x 45 mm), 4 ml	•		RH24-15
	4	12	20 x 60 mm v-vials	•		RH12-20
	5.6	24	18 x 52 mm mini-scintillation vials	•		RH24-18
	12	78	24 x 60 mm scintillation vials		•	RH78-24-60
	16	50	28 x 60 mm scintillation vials		•	RH50-28-60
	50	24	28 x 140 mm vial		•	RH24-28-140
	16	12	28 x 60 mm scintillation vials	•		RH12-28
	16	50	28 x 60 mm scintillation vials		•	RH50-28-60
Bottles	250	8	250 ml centrifuge bottles		•	RH8-200
Microtiter Plates	0.3	2 plates	Multiwell plates (shallow)	•		RH2MP
	0.3	12 plates	Multiwell plates (shallow)		•	MPTR12-210
	1 - 2	8 plates	Multiwell plates (Beckman deepwell)		•	MPTR8-210



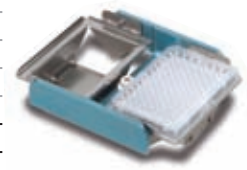
RH20-12



RH72-12



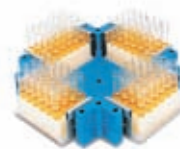
RH6-25



RH2MP

<sup>1</sup> For use with magnetic assembly SUMAX400 <sup>2</sup> For use with magnetic assembly UMA200  
<sup>†</sup> Flasks available separately <sup>††</sup> Flasks and adapters available separately

## Rotor Systems and Blocks for Thermo Scientific Savant SPD2010 SpeedVac Concentrator



PRO-10

### Microplate Rotor Systems

Description	No. of Tubes or Plates	Cat. no.
Includes single-shelf, heavy-duty rotor kit, consisting of FPR-4A rotor, UPC-1 carrier set and SUMAX400 upper magnetic assembly	See rotor block table	PRO-10
Includes double-shelf, heavy-duty rotor kit, consisting of FPR-4A rotor, UPC-2 carrier set and SUMAX400 upper magnetic assembly	8 deep-well plates	PRO-20
Includes five-shelf, heavy-duty rotor kit, consisting of FPR-4A rotor, UPC-5 carrier set and SUMAX400 upper magnetic assembly	20 shallow-well-plates	PRO-50
Adapter for use with SUMAX400		RAD200

\*RAD200 is required if you need to run standard polypropylene rotors on the SUMAX300 and SUMAX400 upper magnetic assembly

UPC-5



### Aluminum Rotor Blocks and Carriers for Use with PRO Rotor Systems

All blocks and carriers come in sets of 2	Description	No. of Tubes or Plates	Cat. no.
Microcentrifuge Tubes	(25) tubes, 1.5 mL (11 x 39 mm)	100	RBA25-11-39
	(30) tubes, 0.5 mL (8 x 30 mm)	120	RBA30-8-30
Glass and Plastic Tubes	(35) tubes, 13 x 100 mm	140	RBA35-13-100
	(24) tubes, 16 x 100 mm	96	RBA24-16-100
	(15) tubes, 16 x 125 mm	60	RBA15-16-125
	(9) tubes, 18 x 150 mm	36	RBA9-18-150
	(18) tubes, 20 x 38 mm	72	RBA18-20-38
	(12) tubes, 22 x 120 mm	48	RBA12-22-120
	(8) tubes, 25 x 150 mm	32	RBA8-25-150
	(12) tubes, 28 x 95 mm	48	RBA12-28-95
Centrifuge Tubes	(24) tubes, 15 mL conical (16 x 100 mm)	96	RBA24-16-100
	(6) tubes, 50 mL conical (30 x 115 mm)	24	RBA6-30-115
Vials	(54) vials, 2 mL, 12 x 32 mm	216	RBA54-12-32
	(24) vials, 15 mm vial, 15 x 75 mm	96	RBA24-15-75
	(24) vials, 1 dram vials, 15 x 45 mm	96	RBA24-15-45
	(24) vials, 2 dram vial, 7 mL, 17 x 60 mm	96	RBA24-17-60
	(12) vials, 2 dram vials, 25 x 52 mm	48	RBA12-25-52
	(12) vials, 5 dram vials, 27 x 60 mm	48	RBA12-27-60
	(18) vials, 20 mL, 22 mm scintillation vial, 22 x 40 mm	72	RBA18-22-40
	(12) vials, 20 mL scintillation vials, 28 x 58 mm	48	RBA12-28-58
Flasks	(2) flasks, 100 mL round or flat bottom	8	RBA2-FLSK-100
	(1) flask, 250 mL round or flat bottom	4	RBA1-FLSK-250
	(1) flask, 500 mL round or flat bottom	4	RBA1-FLSK-500
Microplates	Single shelf carrier	4	UPC-1
	Deepwell, Shallow well (double-shelf carrier)	8	UPC-2
	Shallow well (5-shelf carrier)	20	UPC-5
Heat Sink Plates	V bottom, 96-well microplate	–	HTSP-96V
	Round bottom, 96-well microplate	–	HTSP-96R

## Accessories for Thermo Scientific Savant SPD1010 and SPD2010 SpeedVac Concentrators

### Accessories

Description	Cat. no.	
<b>Vapor Trap</b>	Glass condensation flask	GCF400
	Flask cover for GCF400	FC400
	Foam insulating ring	145-6012-00
	CryoCool® heat transfer fluid (1 liter)	SCC1*
<b>Oligo Preps</b>	Oligo Prep post-trap assembly	ANT100
	Ammonia neutralizing solution (1 bottle)	ANS121
<b>Chemical Traps</b>	Chemical trap (order cartridges separately)	SCT120
	Chemical trap kit for radioactivity (compatible with all Thermo vacuum concentrator products)	DTK120R
	Disposable cartridge for neutralizing acid	DC120A*
	Disposable cartridge for trapping volatile radioactivity	DC120R
	Neutralizing Solution for Acid	NSA300TF
	Acid neutralizing compound for acetic acid	ANC100*
<b>Carts</b>	Convenience cart for SpeedVac® systems	CC120/DX
	Convenience cart for large SpeedVac® systems	CC160/DX

\*Hazardous Materials – These items require special shipping / handling when shipped by air



# Convenience and flexibility in two capacity ranges

## Easy and Convenient to Use

A simple, single-program system allows you to pre-heat the unit and set the temperature, heat and run times, ramp rate and vacuum level. The intuitive control panel incorporates a bright digital display for easy set-up and monitoring.

## Efficient, Reliable Performance

Rapid evaporation and efficient solvent removal is enhanced with a radiant glass cover, while vacuum ramping and pressure controls eliminate sample bumping to maintain sample integrity.

## Minimal Maintenance

A diaphragm vacuum pump makes our concentrators virtually maintenance free, reducing the cost of ownership and maximizing uptime in the busy lab.

## SPD1010

## SPD2010

**Dual vacuum control functions** allow independent control of ramp rate and vacuum level for mixed-solvent applications.

**Bright digital displays** make set up and operation easy.

**Radiant glass cover** maximizes solvent resistance and enhances evaporation rate.

**Integrated 4-liter cold trap** offers 'plug-and-play' convenience. Built-in, oil-free vacuum pump is virtually maintenance free.



◀ The versatile RH200-12 rotor for our SPD2010 concentrator accommodates (200) 1.5 - 2.0 mL microcentrifuge tubes, (200) 12 x 75 mm tubes or (118) 13 x 100 mm tubes.

## The First Name in Vacuum Concentration

For more than 45 years, our Thermo Scientific Savant SpeedVac name has been recognized around the world for delivering value, reliability and performance in centrifugal vacuum concentration. We continue to partner with customers to develop innovative, cost-effective vacuum concentration solutions to support your scientific challenges.

## Thermo Scientific Savant SPD1010 and SPD2010 SpeedVac Concentrators Specifications and Ordering Information



Technical Specifications	SPD1010	SPD2010
<b>Physical Properties</b>		
Dimensions (L x W x H) cm (in)	62 x 66 x 38 (25 x 26 x 15)	77 x 69 x 47 (31 x 27 x 19)
Additional required ventilation space	8 cm (3 in) on all sides	8 cm (3 in) on all sides
Shipping Dimensions, Boxed (W x D x H) cm (in)	83 x 94 x 79 (33 x 37 x 31)	83 x 94 x 79 (33 x 37 x 31)
Product Weight	69 kg (139 lbs)	84 kg (186 lbs)
Shipping Weight (Boxed)	83 kg (185 lbs)	100 kg (222 lbs)
Temperature Setting:	45 - 80°C in 5°C increments	45 - 80°C in 5°C increments
Timer Setting (x2) (Heat and Run Separate):	1 min. to 9 hours and 59 min., continuous	1 min. to 9 hours and 59 min., continuous
<b>Materials of Construction</b>		
Chamber	Teflon coated aluminum	Teflon coated aluminum
Chamber Seal	BUNA N-70	BUNA N-70
Fittings	Polypropylene	Polypropylene
Pump heads	2-headed pump with ETFE diaphragms	2-headed pump with ETFE diaphragms
Cover	Radiant glass cover	Radiant glass cover
<b>Operational Requirements – System</b>		
Voltage Input/Frequency/Power	SPD1010 - 115V 115 VAC / 60 Hz, 12 Amps	SPD1010 - 230V 230 VAC / 50 Hz, 6 Amps
Power Consumption	1380 Watts	1760 Watts
Heat Output	4710 BTU/Hr	6007 BTU/Hr
Plug Configuration		SPD2010 - 220V 220 VAC / 60Hz, 8 Amps
220 VAC	NEMA 6-15P with an IEC 60320 C13 Connector	NEMA 5-15P with an IEC 60320 C13 Connector
230 VAC	CEE 7/7 with an IEC 60320 C13 Connector	CEE 7/7 with an IEC 60320 C13 Connector
Power Inlet Receptacle	IEC 60320 C14	IEC 60320 C14
Motor	Maintenance-free induction motor	Maintenance-free induction motor
<b>Performance Properties</b>		
Concentrator Volume	0.4 - 100 mL	1.5 - 500 mL
Maximum Capacity	(120) 1.5 - 2.0 mL tubes 2 shallow-well microplates	(200) 1.5 - 2.0 mL tubes (216) 2 mL 12 x 32 mm vials (FPR-4A rotor) 12 shallow-well microplates 20 shallow-well microplates (FPR-4A rotor)
Vacuum Pump	ETFE oil-free diaphragm pump	ETFE oil-free diaphragm pump
Capacity	36 L/min at 60 Hz 30 L/min at 50 Hz	36 L/min at 60 Hz 30 L/min at 50 Hz
<b>Vacuum Control</b>		
Ramp rate	1 to 5	1 to 5
Ultimate vacuum level	<10 Torr (13 mbar, 1.3 kPa)	<10 Torr (13 mbar, 1.3 kPa)
Display	Real-time LED display of time	Real-time LED display of time
<b>Cold Trap</b>		
Capacity	4.0 L	4.0 L
Operating Temperature	-50°C	-50°C
Refrigerant	115V 403B 230V 404A	115V 403B 230V 404A
Certification CE, CSA	CE, Low Voltage Directive 73/23/EEC, EMC directive 89/336/EEC, CE Marking directive 93/68/EEC EN50082, Generic Immunity Standard, EN55011 Class A, Industrial, scientific and medical (ISM) radio-frequency equipment – Radio disturbance characteristics – Limits and methods of measurement	
Registration	ISO 9001-2000. Registered by NSAI (National Standard Authority of Ireland). Certificate number 19.1082	

### Ordering Information

Cat. no.	Description
SPD1010-115	Savant SPD1010 Integrated SpeedVac System, 115 VAC/ 60Hz. Includes one RH40-12 rotor and two GCF400 glass condensation flasks.
SPD1010-230	Savant SPD1010 Integrated SpeedVac System, 230 VAC/ 50Hz. Includes one RH40-12 rotor and two GCF400 glass condensation flasks.
SPD2010-220	Savant SPD2010 Integrated SpeedVac System, 220 VAC/ 60Hz. Includes one RH200-12 rotor and two GCF400 glass condensation flasks.
SPD2010-230	Savant SPD2010 Integrated SpeedVac System, 230 VAC/ 50Hz. Includes one RH200-12 rotor and two GCF400 glass condensation flasks.

© 2008 Thermo Fisher Scientific Inc. All rights reserved. All trademarks are the property of Thermo Fisher Scientific Inc. and its subsidiaries. Specifications, terms and pricing are subject to change. Not all products are available in all countries. Please consult your local sales representative for details.