

Software Release Notes, MK.4 ESD & Latch-Up Test System

Release 8.2 (Software, Middleware, and Firmware)

New Release: 8.3
Date: 2008-05-06
Previous Release: 8.2

Component	Version	Previous Version	Part Number
Software	2.1.1.0	2.1.0.0	70-901-205-00
Middleware	1.52.5.0	1.52.5.0	70-901-305-00
Firmware	1.05.20080303	1.04.20080303	70-901-305-00

Effectivity

This is a general release, applicable to all production and field systems.

Dependencies

The versions of the three components in this release (PC Software, Tester Middleware, and Tester Firmware) have been developed and tested to work with each other. Use of other version combinations is not recommended.

NOTE: The PC software in this release has been compiled to run on .NET 2.0 Framework. Prior to installing the software, make sure that:

- The Controller PC's physical memory is at least 2 GB. Recommended amount is 4GB, especially if testing is done using large vector sets.
- The .NET 2.0 Framework must be installed using the *Install .NET* option from the install dialog.

New features

N/A

Fixes/ Improvements/Changes

Middleware

Software

1. The **“Show All Rows”** setting is added back. Before switching to it, the user is prompted to confirm the selection with the dialog (see Figure 1). The prompt can be switched on and off in the Preferences editor (see Figure 2).
2. When closing the result file while Spots tab is active and there are no test selected, the software would crash (fixed)

3. When the list of fixtures is edited and then saved, the user is unable to make a selection in the Run Test dialog, the software will prematurely dispose of fixture objects (fixed)
4. When exporting to a text file only the first page gets exported (fixed)
5. Run-time screen will not highlight the socket under test and failure count is not shown (fixed)
6. Added pre-stress test limit description to the summary page (see Figure 3)

Known issues

See the document named *Known_Issues.pdf* for the list of identified software/hardware problems.

It is known that in some instances freshly install software won't start. It fails with an error message stating that "DocumentTab object is Disposed". Or, the data storage window is not visible, even though the PM software is clearly connected to the Controller. Please take the following steps to remedy this situation:

- Make sure the Controller and PM apps are not running.
- Go to Start->Programs->Thermo – ZapMaster Mk4->Data Folder menu
- Switch to Config folder
- Remove six .LAYOUT files found there (see Figure 4)

The layout files can safely be removed. These files will be regenerated once the software starts again – they control which toolbars and docking windows are shown and in what position. You will have to reconfigure the environment to your liking again once the software is restarted.

Addendum

Figures

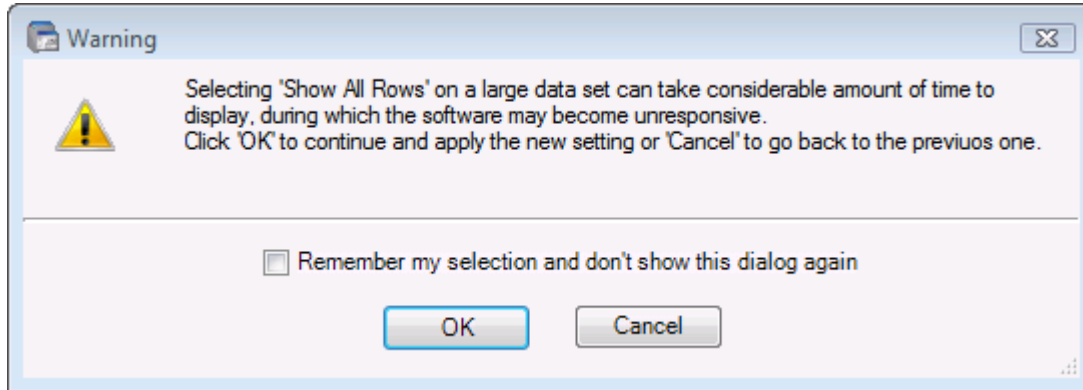


Figure 1. Prompt dialog that's shown when "Show All Rows" is selected

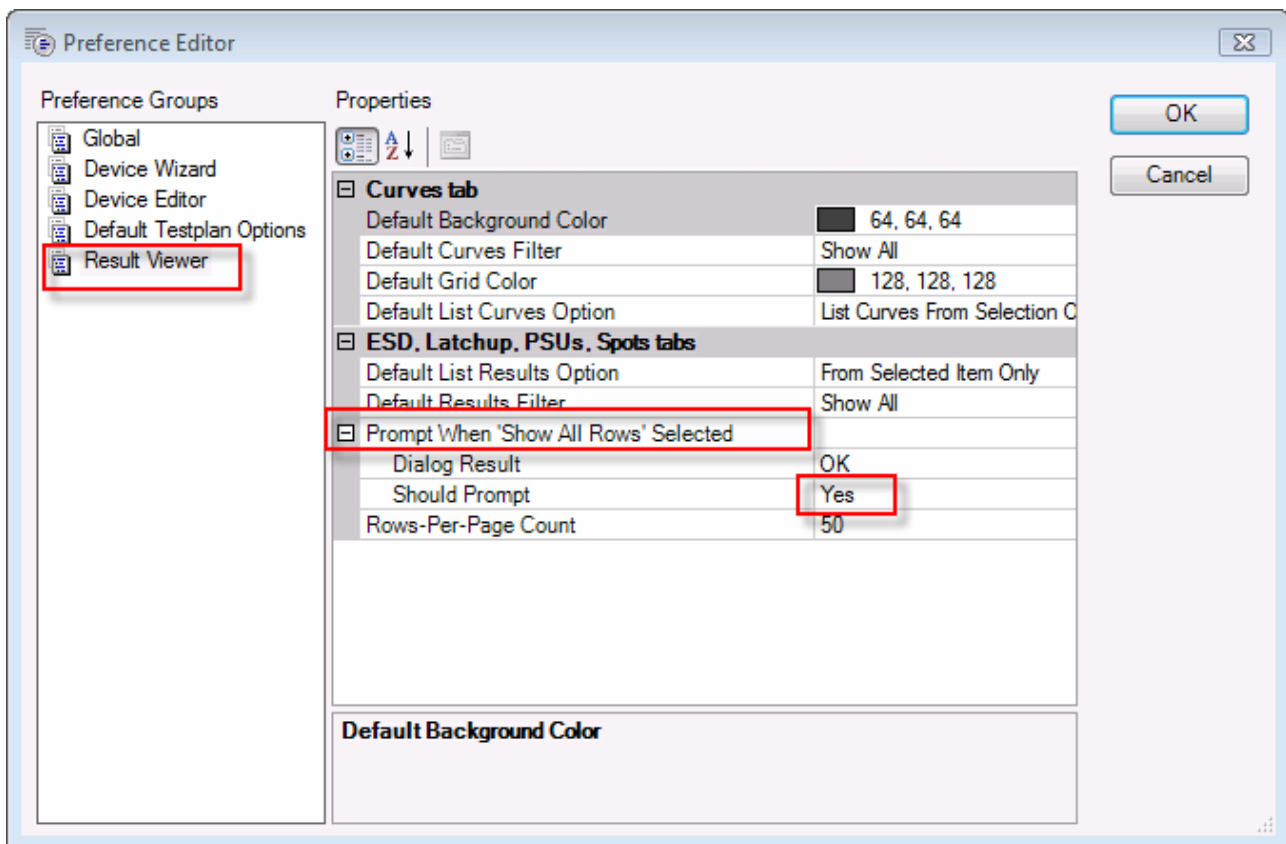


Figure 2. Preference that controls "Show All Rows" prompt

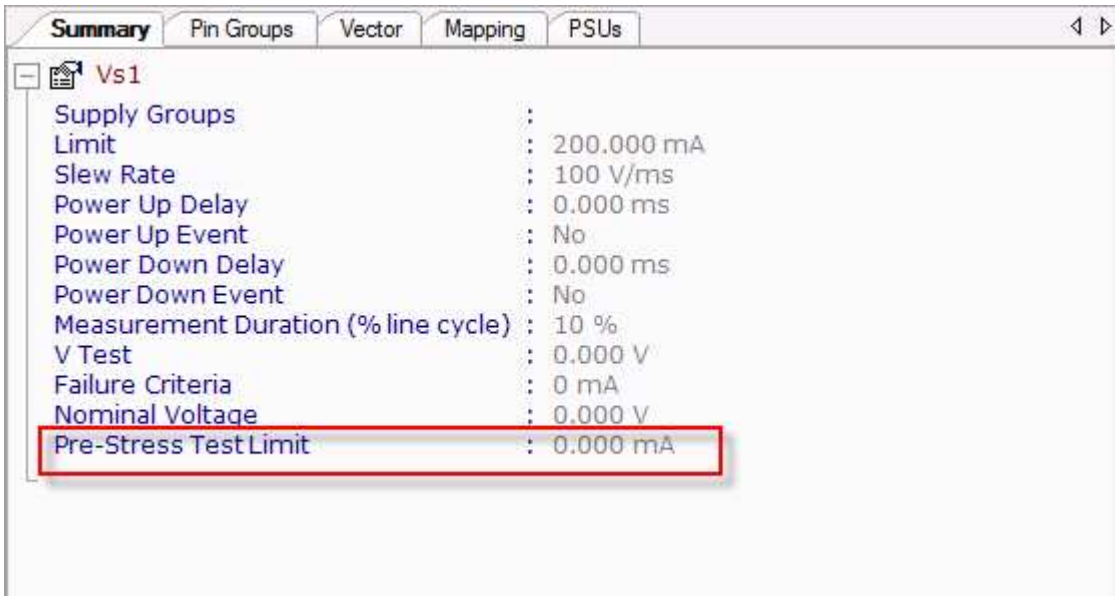


Figure 3. Pre-stress test limit description on summary pane

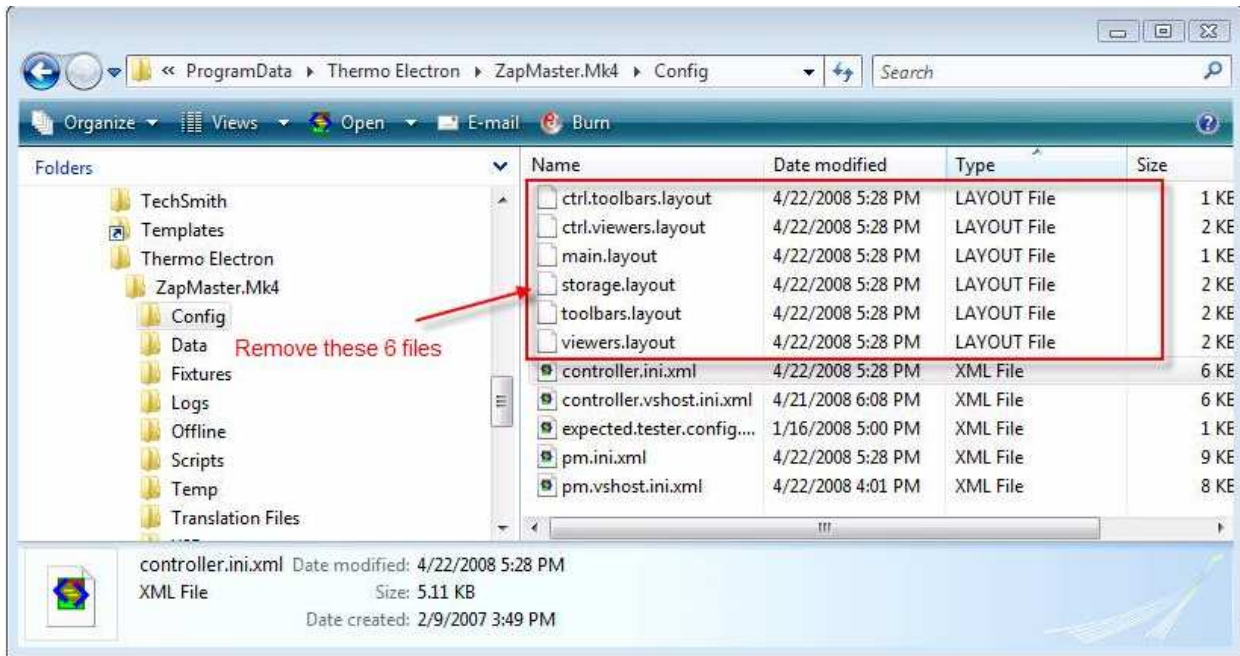


Figure 4. LAYOUT files under Config folder.