

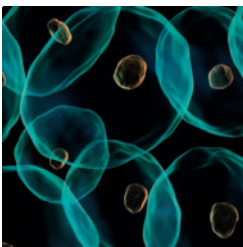
BioMate 6 UV-Visible Spectrophotometer

Accurate results for routine or research assays in the life science laboratory

Designed for reliable performance, the Thermo Scientific BioMate™ 6 spectrophotometer delivers accurate data for demanding life science applications. From routine nucleic acid and protein quantitation to research quality enzyme kinetics assays, the BioMate 6 seamlessly integrates into your laboratory workflow. A variety of accessories provides precise temperature control, automation, and small volume sampling.



The BioMate 6 includes a large sample compartment that can accommodate an array of accessories for temperature control and multi-cell analysis



Thermo Fisher Scientific has an established reputation for producing quality spectrophotometers that spans over 60 years and over 650,000 units. This rich tradition includes notable instrument such as the AMINCO DW-2000 and the SPECTRONIC™ 20. Out of this experience in UV-Vis spectrophotometry comes the BioMate 6 – an instrument you can count on to meet the demands of your life science laboratory.

Designed for Performance

The double-beam geometry of the BioMate 6 allows simultaneous measurement of the sample against a reference solution. Because biological samples change over time, the constant measurement of a reference or control sample ensures accurate data. Tungsten and halogen lamps provide balanced illumination over the full instrument wavelength range of 190-900 nm.

Software Enhanced Flexibility

Embedded software in the BioMate 6 provides pre-programmed assays for RNA/DNA concentration and purity estimation, protein concentrations, cell growth, kinetics and routine measurements.

For more advanced assays, VISION^{pro}™ and VISION^{life}™ software combine to offer instrument control and data analysis capability for wavelength scanning, fixed wavelength measurements, quantitative analysis, and single or multicell kinetics. The full-featured Rate application provides serial, parallel, and triggered rate modes. Using the integrated advanced Kinetic Analysis software, rate and concentration data can easily be analyzed using pre-defined enzyme kinetic and binding models from basic Michaelis-Menten to Hill plots, or user-entered equations.

Accuracy and Performance for the Life Science Laboratory

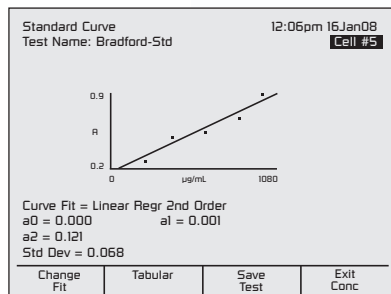
Simplify the Routine

Are you tired of writing down absorption values from your spectrophotometer and working up the data in a notebook with a calculator or on a spreadsheet? The BioMate 6 offers time-saving, pre-programmed assays for fast, accurate results.

Nucleic acid concentration and purity estimations, protein concentration, and cell growth at 600 nm are all built into the BioMate 6. A flexible Oligo calculator feature for calculating molecular weight, theoretical T_m and oligo concentration factor is included.

Simple, intuitive menus and embedded software driven by graphical SoftKeys ensure that most measurements can be accessed in only a few keystrokes. From the Protein Concentration menu, use a 3-step process to start a BCA protein concentration assay. The built-in software is easy to modify for the needs of your laboratory. Simply change the parameters and save up to 120 methods to the internal memory.

The unique SmartStart™ feature allows you to place the most frequently used methods on the first screen each time the instrument is turned on. *Only run three different assays in your lab?* Stop searching through menus to find them and make them SmartStart tests. SmartStart makes training users simple and allows easy access to the laboratory tests you use every day.



Advanced Data Collection and Analysis

Some life science UV-Visible assays require advanced software features and our capable VISION software is there to provide the power you need. Use the power of derivatives to uncover features hidden inside your data. Advanced scanning allows data to be acquired in 1st through 4th derivative mode or to be converted after acquisition.

Need even more power? Use OriginPro or GRAMS™ to analyze your life science data. From iterative curve fitting with custom equations to database searching, we have a software solution to deliver the results you demand. Simply export the data from VISION™ and import into any data analysis package

USB Convenience

Export your data right from the BioMate 6 to a USB memory device. Save time and make your data completely transportable. Use the VISION software to work up data later on a PC away from the instrument. A variety of USB printers are also supported by the BioMate 6 making it easy to get clear printed results from a local control instrument, no need for a computer.

Small Volume Analysis

If you occasionally need to analyze small volume samples in addition to routine UV-Visible measurements, the nanoCell extends the measurement capabilities of your BioMate 6 to microliter samples. Analyze concentrated solutions without dilution. The interchangeable 0.2 mm and 1.0 mm pathlengths of the nanoCell allow for greater accuracy and sensitivity over a wide concentration range, identical to preparing 10- or 50-fold dilutions.



Convenient Peltier Temperature Control

Traditional recirculating water systems rely on the transfer of heat to a large volume of liquid, providing slow temperature transition and poor long-term temperature stability. Peltier cell holders offer exceptional temperature stability and fast temperature transitions. The Air-cooled Peltier accessory for the BioMate 6 delivers superior performance in an easy-to-use configuration. Designed for biologically relevant assays that require temperature control at 25°, 37°, 40° and 50 °C, the Air-cooled Peltier accessory delivers reliable temperature control from 20° to 60 °C with ± 0.1 °C accuracy and precision. Precision electronics allow thermal equilibrium to be reached rapidly inside the cell without exceeding the set point temperature, which can damage the sample.

The Air-cooled Peltier accessory is less expensive than most recirculating liquid temperature controllers and delivers much better performance with absolutely no maintenance.



Enhanced Liquid Thermostatting

For temperature control with recirculating liquid, there is no better choice than the TPS-1500W Peltier Water Circulation Bath. Using a small volume (150 mL) of liquid, this accessory uses a Peltier for precise temperature control. If liquid recirculation is required for multi-cell experiments, look no further for performance. The sealed system and the small volume of water used in the accessory allows accuracy to 0.05 °C. In addition to delivering powerful performance, this cost-effective accessory requires little to no maintenance.

Automated, Traceable Performance Verification

The Calibration Validation Carousel (CVC) provides automated performance verification, saving time and avoiding costly errors. Simply install the accessory, select which tests you want to run and the instrument and accessory does the rest. After recognizing a serial number, the CVC uses built-in traceable standards to check instrument performance according to USP protocols. In accordance with GLP, each verification test report gives the time, date, and instrument serial number.

Thermo Fisher Scientific provides a traceable standard verifying DNA concentration and the 260/280 ratio. This standard provides assurance that your instrument is providing accurate measurements.



Available as a stand-alone Local Control system or connected to a PC, the BioMate 6 provides all the tools necessary for reliable life science analysis.

Accessories for Your Sample



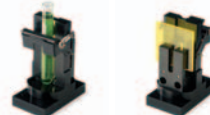
TPS-1500W Peltier Water Circulation Bath



7-cell Changer with Thermostatting Kit



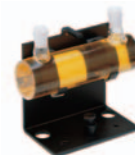
Water-Thermostatable Single Position Cell Holder



Combination Test Tube and Cell Holder



Variable Pathlength Cell Holder



100 mm Pathlength Cylindrical Cell Holder



Holder for 1" Square Hach Cells and Accuvac Ampule



CETAC Autosamplers



Calibration Validation Carousel



SuperSipper



DNA Standard



NanoCell



Single Cell Peltier

Product Specifications

Specification	BioMate 6
Optical Design	Double-beam, Seya-Namioka Monochromator
Spectral Bandwidth	2 nm
Light Source (typical service life)	Deuterium: 1,000 hours Tungsten: 2,000 hours
Detectors	Dual Silicon Photodiodes
Scan Ordinate Modes	Abs, %T, Intensity, 1-4 Derivative
Wavelength	
Range	190 - 1,100 nm
Accuracy	± 1.0 nm
Repeatability	± 0.2 nm
Slew Speed	3,800 nm/min
Scanning Speed	1 - 3,800 nm/min
Data Interval	0.2, 0.5, 1.0, 2.0, 4.0, 10.0 nm
Photometric	
Range	-0.1 - 200 %T -0.3 - 3.0 A 0 - 9999 C
Readout	Absorbance, % Transmittance, Concentration
Accuracy	0.005A at 1A
Noise	< 0.0002 A, 500 nm, RMS
Drift	< 0.001 A/hour (after warm-up)
Stray Light	< 0.05 %T at 220, 340 and 400 nm
Display	VGA-Quality LCD, 4.5" x 3.3"
Keypad	Sealed Membrane Keypad
Peak Picking	Peaks, Valleys, Pks & Valleys, Zero Crossovers, Ratio, Corrected Ratio, Pk height
Fixed Wavelength (up to 20 wavelengths)	Abs, %T, Conc (Factored Absorbance)
Quantitation (up to 20 standards and 3 replicates)	Linear, Direct Linear, Quadratic and Direct Quadratic
Rate (up to 100 minute kinetic runs)	Display up to 7 kinetics curves per run
Multicomponent	Up to 20 components with up to 20 scan wavelengths
Printer (optional)	USB compatible printers
Communications	Bi-directional RS232C, USB output for printers and storage
Power Requirements	100 - 240 Volts
Dimensions	45.5 W x 39.5 D x 21.5 H cm (18" x 15.5" x 8.5")
Weight	10 kg (22.1 lb)
Warranty	1 year

BioMate 6 Local Control Software Features

Nucleic acid 260/280 and 260/230 ratio with or without scanning
Direct nucleic acid concentration at 260 nm
Direct protein concentration at 280 and 205 nm
Colorimetric Protein Assays: Coomassie/Bradford, Lowry, Pierce® Modified Lowry, BCA, Pierce Micro-BCA, Biuret, Warburg-Christian
Oligo Calculator: molar absorptivity, molecular weight, factor and theoretical T _m
Multi-cell Kinetics
Cell Growth (with scaling factor)
Wavelength Scanning
Fixed Wavelength Analysis
Performance Verification Tests

Ordering Information

BioMate 6	Part Number
BioMate 6 UV-Visible spectrophotometer, 120/240V	9423BIO1102E

Optional Software and Accessories	Part Number
VISION _{pro} software	10040101
VISION _{lite} software	10040201
VISION _{security} software	10040301
VISION _{lite} ColorCalc Advanced	869-124400
EnzLab	10041001
EnzLab SE	869-127100
GRAMS A/I 8.0	869-126900
Origin Pro 7.5	869-127000
TPS-1500W Peltier Water Circulation Bath	222-238800
7-Cell Changer with Thermostating Kit	9423UV53400E, 9423UV52210E
Water Thermostatable Single Position Cell Holder	9423UV52200E, 9423UV52210E
Combination Test Tube and Cell Holder	9423UV52250E
Variable Pathlength Cell Holder, 1-50 mm pathlength	9423UV51200E
100 mm pathlength Rectangular Cell Holder	9423UV51240E
100 mm pathlength Cylindrical Cell Holder	9423UV51210E
Micro Cell Holder	9423UV52400E
4-Rack Autosampler (ASX-520)	222-239700
2-Rack Autosampler (ASX-260)	222-239800
CVC (NIST-traceable) for BioMate 6	9423UV61460E
CVC (NPL-traceable) for BioMate 6	9423UV61400E
SuperSipper	9423UV64250E
nanoCell Accessory (0.2 and 1.0mm pathlength)	222-230300
Peltier Cell Holder + Temperature Controller (BioMate 6)	222-238200
Certified DNA Standard (sealed cuvette)	268-831300

©2008 Thermo Fisher Scientific Inc. All rights reserved. All trademarks are the property of Thermo Fisher Scientific Inc. and its subsidiaries. Specifications, terms and pricing are subject to change. Not all products are available in all countries. Please consult your local sales representative for details.

www.thermo.com/selectuv

PS51655_E 05/08M

Africa +43 1 333 5034 127
Australia +61 2 8844 9500
Austria +43 1 333 50340
Belgium +32 2 482 30 30
Canada +1 800 530 8447
China +86 10 8419 3588

Denmark +45 70 23 62 60
Europe-Other +43 1 333 5034 127
France +33 1 60 92 48 00
Germany +49 6103 408 1014
India +91 22 6742 9434
Italy +39 02 950 591

Japan +81 45 453 9100
Latin America +1 608 276 5659
Middle East +43 1 333 5034 127
Netherlands +31 76 579 55 55
South Africa +27 11 570 1840
Spain +34 914 845 965

Sweden/Norway/Finland
 +46 8 556 468 00
Switzerland +41 61 48784 00
UK +44 1442 233555
USA +1 800 532 4752
www.thermo.com

Thermo
 SCIENTIFIC