

Thermo Scientific S1P₁:PKA Redistribution[®] Assay

The Redistribution technology monitors the cellular translocation of GFP-tagged proteins in response to drug compounds or other stimuli and allows easy acquisition of multiple readouts from the same cell in a single assay run. In addition to the primary readout, high content assays provide supplementary information about cell morphology, compound fluorescence, and cellular toxicity.

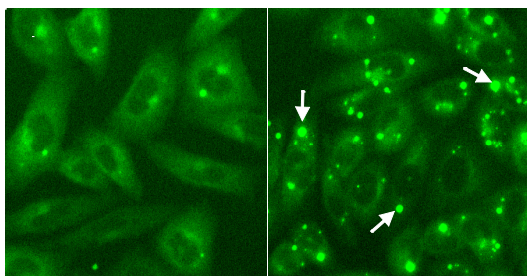


Figure 1. Cytoplasmic foci formation of PKAcat-GFP. Cells expressing the S1P₁ receptor were treated with 40 μ M forskolin for 5 min in the presence (right panel) or absence (left panel) of 3 nM S1P. Activation of the receptor inhibits the forskolin-induced dispersion of PKAcat-GFP aggregates. Arrows indicated the cytoplasmic foci detected by the image analysis algorithm (right panel).

Thermo Scientific S1P₁:PKA Redistribution Assay

Sphingosine-1-phosphate (S1P) is a pleiotropic platelet-derived lysophospholipid involved in the regulation of cell growth and differentiation and thereby important for angiogenesis, embryogenesis, and atherosclerosis [1,2]. There are five known G protein-coupled S1P receptors in mammals. Binding of S1P to the S1P₁ receptor activates G α _i and G α _o resulting in adenylyl cyclase inhibition, phospholipase C activation, Ca²⁺ mobilization, Ras-Erk activation, and PI3 kinase activation. In this assay, the S1P₁ receptor is stably transfected into a GPCR Reporter Assay for Gs/Gi-coupled Receptors.

This assay system measures translocation of protein kinase A (PKA) in response to changes in the cytoplasmic cAMP concentration. Binding of an agonist to the extracellular parts of the S1P₁ receptor causes activation of the Gi complex at the intracellular face of the receptor. This leads to inhibition of adenylyl cyclase, which catalyzes the formation of cAMP from ATP. In

cells stimulated with forskolin that induces high levels of cAMP, PKAcat-GFP is found in a diffuse localization in the cytoplasm. S1P₁ activation leads to inhibition of adenylyl cyclase and thereby less cAMP. This, in turn, leads to aggregation of PKAcat-GFP in cytoplasmic foci [3-5].

Features

- Designed to assay compounds for their ability to inhibit a cAMP response through the S1P₁ receptor
- Coupled to EGFP for easy monitoring of the cellular translocation event
- Robust cell-based assay for use in high content analysis and fluorescence microscope applications

Highlights:

- **Biologically relevant data**
Compounds tested in a cellular environment
- **Validated**
Functionally tested cells provided with an optimized assay protocol
- **Easy to use**
Just plate cells, add compounds, and image

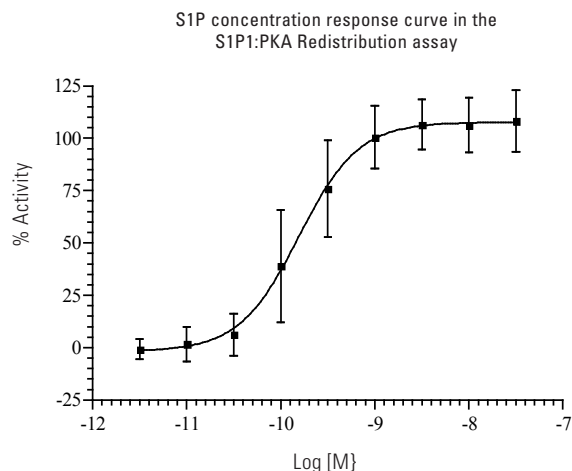


Figure 2. S1P concentration response in the S1P1:PKA assay. Concentration response was measured in 9 point half log dilution series ($n = 32$). The EC_{50} of S1P is ~ 150 pM. Cells were treated with S1P in the presence of forskolin for 5 min. Cells were then fixed and cytoplasmic spot formation was measured using the Cellomics ArrayScan V^{II} Reader and the SpotDetectorV3 BioApplication. % activity was calculated relative to the positive (3 nM S1P) and negative control (0.25% DMSO).

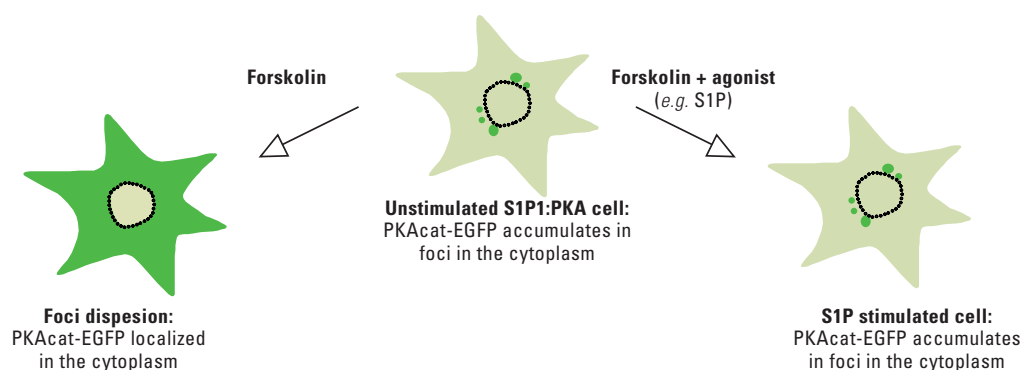


Figure 3. Illustration of the PKAcat translocation event.

Thermo Scientific S1P1:PKA Redistribution[®] Assay

Assay Details

Recombinant CHO-K1 cells stably expressing the S1P1 receptor and the catalytic domain of human Protein Kinase A (PKAcat) fused to the N-terminus of enhanced green fluorescent protein (EGFP). The assay is designed to screen for compounds that modulate cAMP signaling via the S1P1 receptor. S1P is used as the reference compound. The S1P1:PKA assay is validated with an average $Z' = 0.46 \pm 0.05$, suitable for both screening and profiling applications.

Imaging

The translocation of PKAcat-EGFP can be imaged on most HCS platforms and fluorescence microscopes. The filters should be set for Hoechst (350/461 nm) and GFP/FITC (488/509 nm) (wavelength for excitation and emission maxima). Consult the instrument manual for the correct filter settings. The translocation can typically be analyzed on images taken with a 10x objective or higher magnification. The primary output in the S1P1:PKA Redistribution assay is the formation

of spots in the cytoplasm. The data analysis should therefore report an output that corresponds to number, area, or intensity of spots in the cytoplasm.

Imaging on Thermo Scientific Cellomics ArrayScan V^{II}

This assay has been validated on the Cellomics ArrayScan V^{II} using a 10x objective (0.63X coupler), XF100 filter sets for Hoechst and FITC, and the SpotDetectorV3 BioApplication. The output parameter used was SpotTotalIntenPerObject. The minimally acceptable number of cells used for image analysis in each well was set to 250 cells. Other BioApplications that can be used for this assay include SpotDetectorV2, CompartmentalAnalysisV2, and ColocalizationV3.

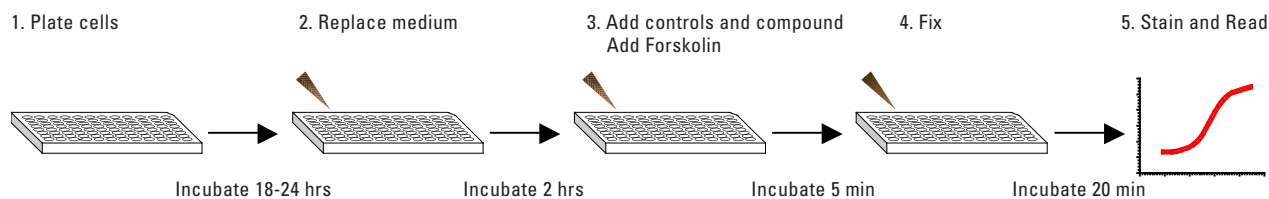


Figure 4. The S1P1:PKA Redistribution assay is very easy and fast to perform.

Ordering Information

PRODUCT #	DESCRIPTION	CELL LINE	PROFILING	SCREENING	CRYOREDI
067_01	S1P1:PKA Redistribution Assay	CHO-K1	•	•	

The Redistribution Assays are available in 3 product formats, Profiling, Screening and CryoRedi, for different volume and level of convenience needs. The Redistribution Assays can also be accessed through the Thermo Scientific Managed Services.

Related Thermo Scientific Products

PRODUCT #	DESCRIPTION	CELL LINE	PROFILING	SCREENING	CRYOREDI
017_02	Gq-coupled GPCRs – NFATc1 Redistribution Assay	U2OS	•	•	
045_02	Gs/Gi-coupled GPCRs – PKA Redistribution Assay	CHO-K1	•	•	
046_01	β 2-AR:PKA Redistribution Assay	CHO-K1	•	•	
048_01	NK1:NFATc1 Redistribution Assay	U2OS	•	•	
072_01	M2:PKA Redistribution Assay	CHO-K1	•	•	
088_01	M1:NFATc1 Redistribution Assay	U2OS	•	•	
081_01	MOR1:PKA Redistribution Assay	CHO-K1	•	•	
073_01	M3:NFATc1 Redistribution Assay	U2OS	•	•	
078_01	AT1:NFATc1 Redistribution Assay	U2OS	•	•	
079_01	MCH1:NFATc1 Redistribution Assay	U2OS	•	•	
047_01	GlucagonR:PKA Redistribution Assay	CHO-K1	•	•	
8404301	Cellomics PKA Activation HCS Reagent Kit	Antibody- and dye-based reagent kit			
8401501	Cellomics Phospho-CREB HCS Reagent Kit	Antibody- and dye-based reagent kit			
K0100101	Cellomics ATF-2 Activation HCS Reagent Kit	Antibody- and dye-based reagent kit			
CX03004-INS	Cellomics ONE BioApplication Suite	High content data acquisition and analysis software			
CX03102A/B	Cellomics ArrayScan V ^{TI}	Flexible, high throughput, high content reader			
N01-3001	CellWoRx	Economical high content reader			

References

- Rosen H & Goetzl EJ, *Nature Rev Immunol.*, 5, 560-570, 2005.
- Kostenis E, *J Cell Biochem.*, 92, 923-936, 2004.
- Feliciello, A. et al., *J. Mol. Biol.*; 308, 99-114, 2001.
- Almholt, K. et al., *Cell Signal.*; 16, 907-20, 2004.
- Zaccolo, M. et al., *Nat. Cell Biol.*; 2, 25-29, 2000.

© 2008 Thermo Fisher Scientific Inc. All rights reserved. All trademarks are the property of Thermo Fisher Scientific Inc. and its subsidiaries.

