

Shandon Excelsior™ ES Tissue Processor

Now Xylene-Free!!!

NEW



- **The only xylene-free application with no microwaves or excessive heat**
- **40% cost reduction in processing reagents**
- **No hands-on time for reagent management**
- **The only tissue processor with in-process reagent rotation**
- **Intuitive software accomodates all users**
- **The safest processor on the market**
 - *Unique down-draft ventilation*
 - *Formaldehyde and solvent air filters*
 - *Battery back-up power supply*

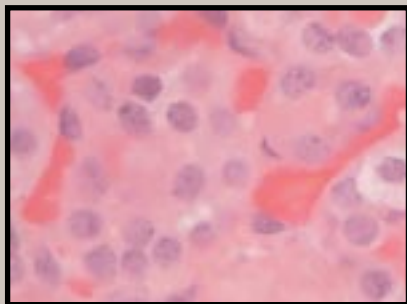
Why Reduce Xylene from Tissue Processing?

- *Same day turn-around for diagnostic evaluation*
- *25% reduction in processing time*
- *Better microscopic results*
- *It is safer for your staff and the environment*
- *Due to CAP “unannounced” site inspections*

Xylene-free Routine Overnight Program

Total Time 8 Hours

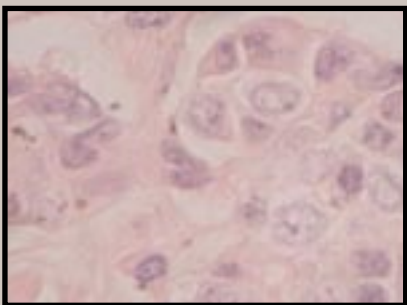
Reagent	Temperature	Time	Drain	Vacuum	Stir
Formalin	Amb/45° C	1:00	60	Off	5
Formalin	Amb/45° C	1:00	120	Off	5
IPA 1	35/45° C	:30	60	On	5
IPA 2	35/45° C	:30	60	On	5
IPA 3	35/45° C	:30	60	On	5
IPA 4	35/45° C	:30	60	On	5
IPA 5	35/45° C	:30	60	On	5
IPA 6	35/45° C	:45	120	On	5
WAX 1	65° C	:45	120	On	5
WAX 2	65° C	1:00	120	On	5
WAX 3	65° C	1:00	120	On	5



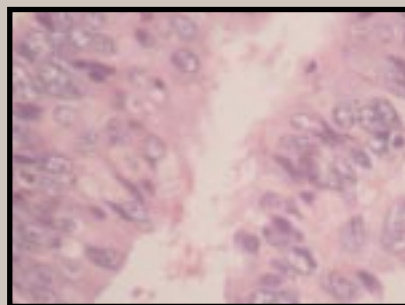
Thyroid

- Changes in processing programs may require adjustments to staining protocols.

- Application Support is available for assistance if needed.



Breast



Colon

Shandon Excelsior™ ES Specifications

Description	Order Number
Shandon Excelsior ES	110-240v, 50/60 Hz, 1Ph A78400006

Physical Specifications

Dimensions (H x W x D)

63" x 26.5" x 20.5" (160 x 67 x 52 cm)

Weight

246.5 lbs. (112 kg)

Power Requirements

950VA (maximum); 200VA (typical)

Included with Product*

Description	Order Number
Formaldehyde (Potassium Permanganate) Filter - Each	9990612
Vapor Filter (Charcoal) - Each	9990610
Organized Basket - 6 Baskets	A78410025
Random Basket	A78410021
Basket Lid (Organized and Random)	A78420156
Large Block Metal Divider (for Random Basket)	A78430198
Water Flush Bottle + Cap	A78420039
Storage Bottles - 5 Liter (2 supplied)	See Below
Waste Wax Drawer Assembly - 2 Drawers, 2 Lids, 1 Cover	See Below
Monitor	AP14340
Operator Manual (Specify Language)	A78410100
Service Record Book	A78410110
Spatula	P09046
Wax Fill Chute	A78430265
Wax Waste Liners - 20 / Pk.	AP14747
Wrench / Spanner	A78430308
Screen Information Card	A784-1002

*Contents, Packaging, and Quantities of items listed under "Included with Product" are subject to change without prior notice.

Available Accessories

Description	Order Number
Formaldehyde (Potassium Permanganate) Filter - 6 / Pk.	B9990612CS
Vapor Filter (Charcoal) - 6 / Pk.	7411258
Service Manual	A78410101
Waste Wax Drawer Kit - 1 Drawer, 1 Lid	A78410027
Plastic Basket Carrying Container (microwavable)	B35210007
Storage Bottles - 5 Liter - 6 / Pk.	A78410026
Downdraft Extraction Duct Adapter Kit	A78410023
Main Air System Duct Adapter Kit	A78410024
Monitor Clamp Kit	A78410029

Agency Approvals

Designed to meet IEC 61010, CSA, UL, and CE Mark (IVDD compliant).

Anatomical Pathology USA

Tel: 1-800-547-7429 1-412-788-1133
Fax: 1-412-788-1138

Anatomical Pathology International

Tel: 0800 0189396 +44 (0) 1928 562501
Fax: +44 (0) 1928 562627

Anatomical Pathology Latin America/Canada

Tel: 1-412-788-2460
Fax: 1-412-788-2480

Email: clinical.diagnostics@thermo.com

Internet: www.thermo.com/shandon